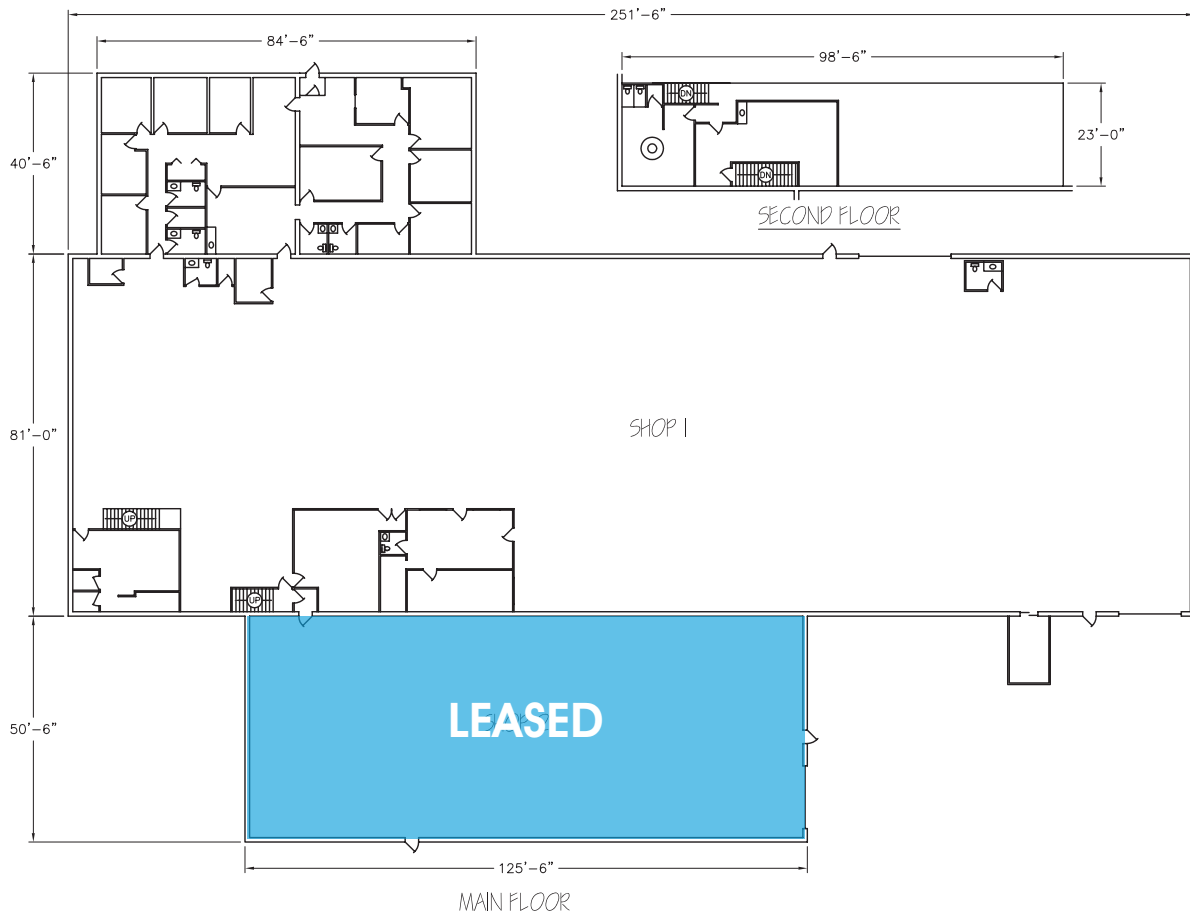




Industrial | Office, Warehouse



5905 86 St NW
Edmonton, Alberta
Lease Opportunity



LEASE INFORMATION

Base Rent	Market
Availability	January 2017
Term	Minimum five (5) years

SITE FEATURES

This industrial manufacturing building is located just off of Davies Road and 86 Street. Amenities include 24-foot building height, numerous overhead cranes, heavy power, airlines, sumps, and make-up air units.

SITE DETAILS

Address

5905 86 St NW
Edmonton, Alberta

Legal

Plan 9122127
Block 17, Lot 1C

Zoning

IB – Business Industrial

Type

Industrial Office,
Warehouse

Year Built

1974

Site Area

1.91 acres

Available Area

Office is 5,687 SF
Total is 23,793 SF

Loading

One (1) – 20' x 16'
One (1) – 18' x 16'

Ceiling Height

24.5 feet (18' Under Hook)

Power

800 amp, 480 volt, 3 phase

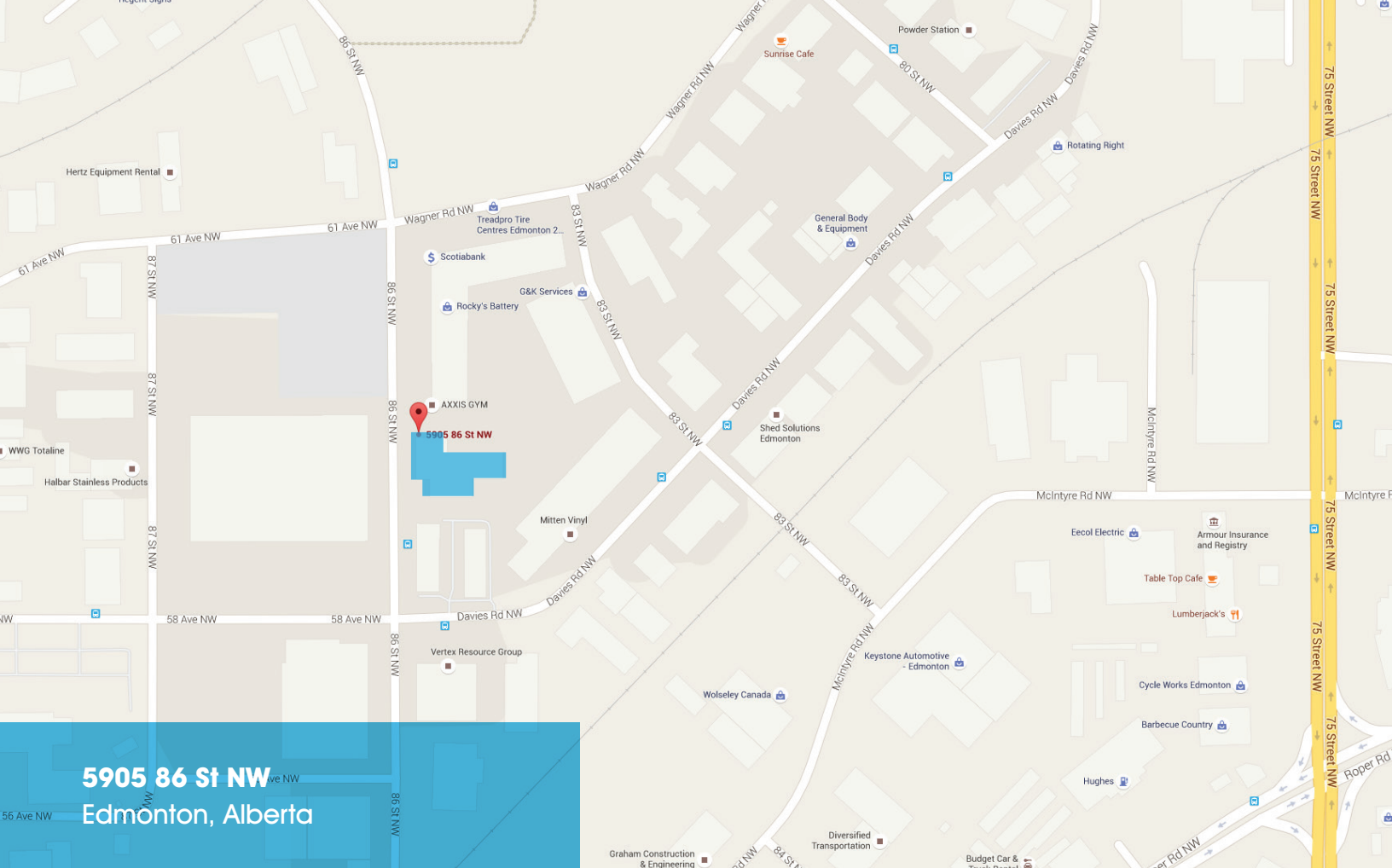
Building Amenities

- Overhead cranes
(2) 3 ton bridge, (2) 5 ton bridge, (4) half ton jib

- Airlines

- Sumps

- Make-up air units



5905 86 St NW
Edmonton, Alberta

SITE TOUR INFORMATION Site tours by appointment only

Sherri Joyce

780.421.4000 ext. 6 (office)

sherri@yorkrealty.ca



Suite 1622, Canadian Western Bank Place
10303 Jasper Avenue | Edmonton, Alberta | T5J 3N6 | T 780.421.4000

YORKREALTY.CA