



GREAT PLAINS

INDUSTRIAL PARK

5 ACRES OF BUILD-TO-SUIT LAND





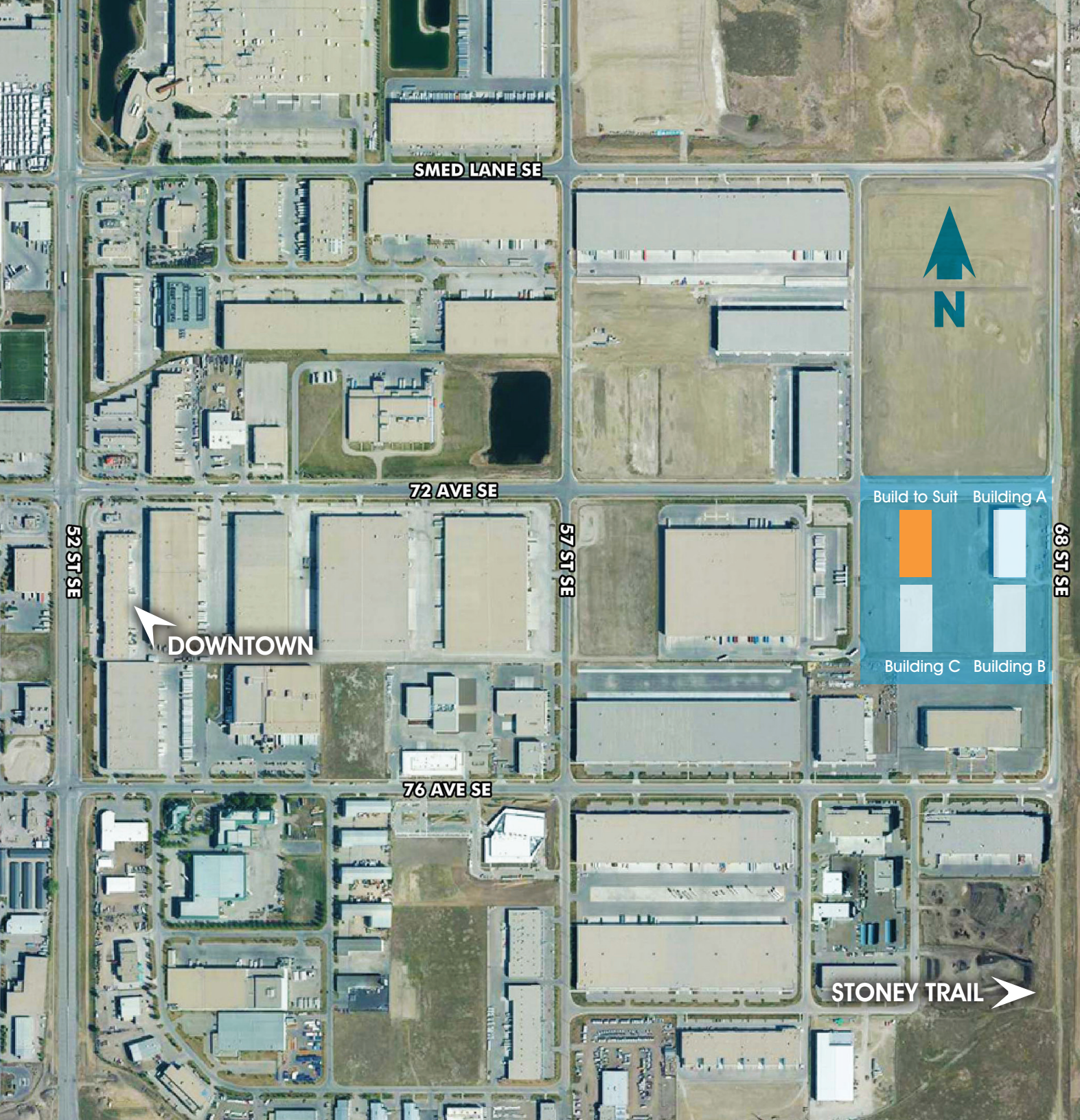
..... THE DEVELOPMENT

York's Great Plains Industrial Development is one of the newest, most sophisticated business campuses in Calgary. Located in the city's southeast, our Great Plains Industrial Park will comprise of up to 7 buildings totaling over 200,000 square feet of space across 20 acres. Each building has been designed to provide the utmost in flexibility and versatility. Amenities include 32' clear height ceilings, OPAL Sunshine Overhead doors, fully sprinklered, crane ready, well-lit bays varying in size from 10,000 SF to 55,000 SF. Fully customizable design build facilities can also be erected on this site.

..... THE DEVELOPER

York Realty currently owns and manages over 5 million square feet of commercial real estate across Western Canada. Focused almost exclusively on industrial facilities ranging from single tenant distribution centres to 'small-bay' multi tenant buildings we have developed a sterling reputation as highly knowledgeable, flexible and professional development firm. We stand by our buildings and are proud to deliver some of the highest quality and most usable facilities available to our tenants.





SMED LANE SE

72 AVE SE

76 AVE SE

52 ST SE

57 ST SE

68 ST SE

DOWNTOWN

STONEY TRAIL



Build to Suit	Building A
Building C	Building B





NOTE

- Glazing can be converted to overhead doors.
- All paving, gravelling and other site work now complete.



NOTE

- Glazing can be converted to overhead doors.
- All paving, gravelling and other site work now complete.



Suite 1622, Canadian Western Bank Place
10303 Jasper Avenue | Edmonton, Alberta | T5J 3N6 | T 780.421.4000

YORKREALTY.CA

ANDREW RUDZITIS

Leasing Manager

587.572.3175
andrew@yorkrealty.ca

Matt Woolsey

President

780.421.4000
matt@yorkrealty.ca