



PROPERTY HIGHLIGHTS

- 4,800 SF Available
- LED Lighting
- 12' Grade Loading Door
- Available Immediately

Site Tour Information Site tours by appointment only

780.421.4000 | leasing@yorkrealty.ca | YORKREALTY.CA

Canadian Western Bank Place
Suite 1600, 10303 Jasper Avenue
Edmonton, Alberta | T5J 3N6



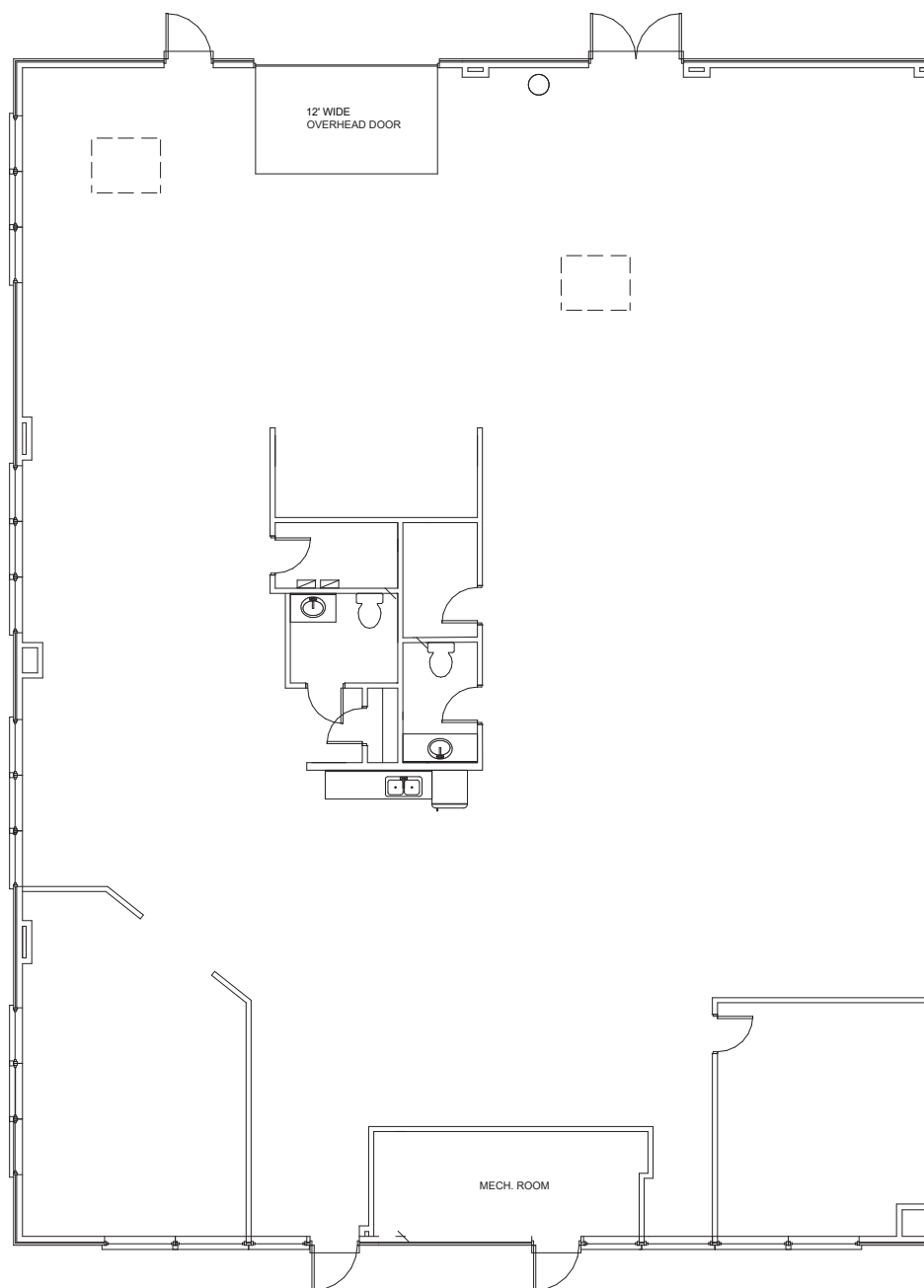
DETAILS

ADDRESS	Unit 1 & 3 920 28 Street NE
ZONING	I-G (Industrial General)
SIZE	4,800 SF
LOADING	One (1) 12' Grade Door
CLEAR HEIGHT	18'
POWER	200 Amps - 250 Volt
HEATING	Rooftop HVAC Units
LIGHTING	LED

LEASING INFORMATION

BASE RENT	Market
OP COSTS	\$5.56 PSF (2023 est)
AVAILABILITY	Immediately

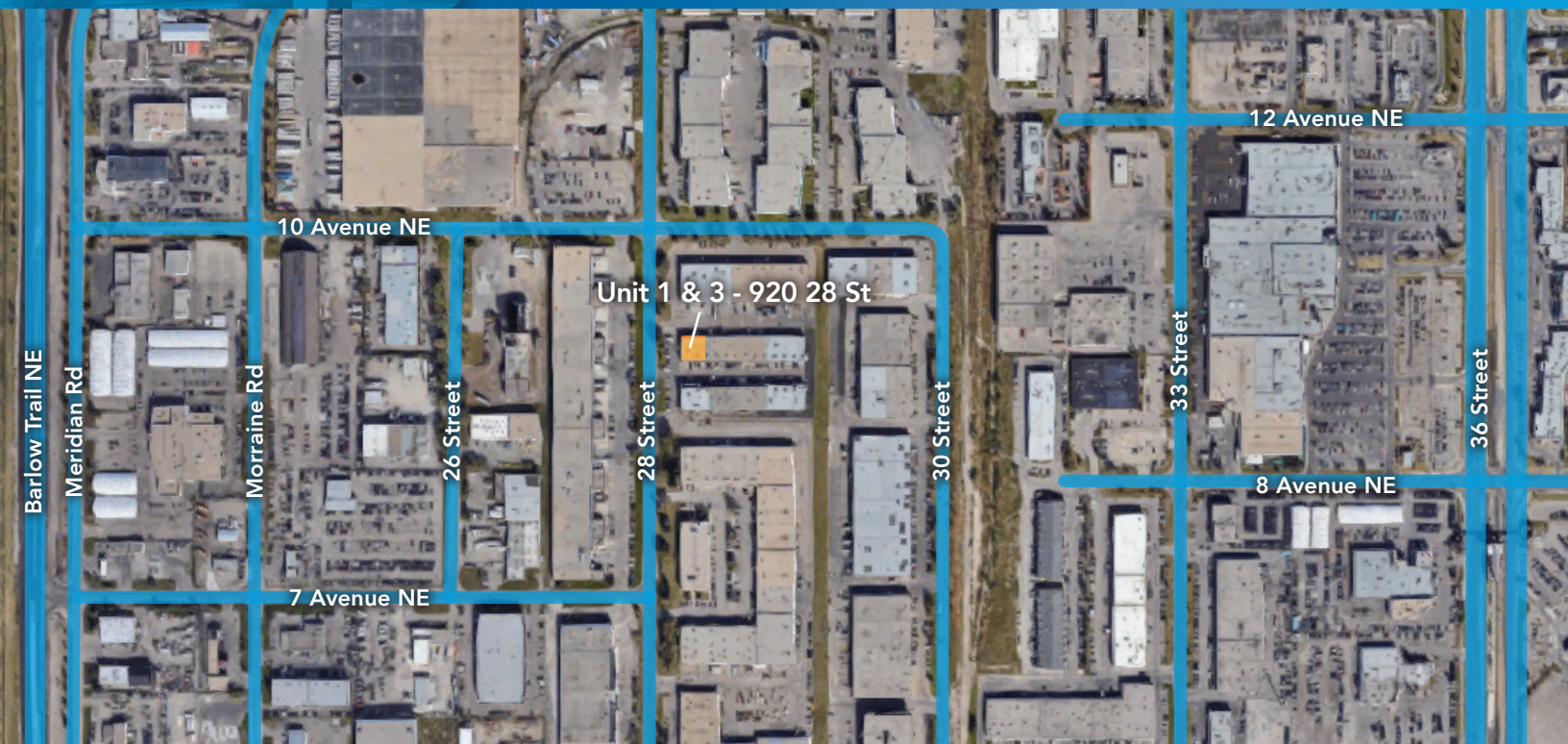
FLOOR PLAN



AVAILABLE FOR LEASE

UNIT 1 & 3 - 920 28 Street NE

Calgary, Alberta



Site Tour Information Site tours by appointment only

780.421.4000 | leasing@yorkrealty.ca | YORKREALTY.CA

Canadian Western Bank Place

Suite 1600, 10303 Jasper Avenue
Edmonton, Alberta | T5J 3N6