



## PROPERTY HIGHLIGHTS

- LED Lighting
- Available Immediately
- 3 Drive-in, and 2 Dock loading doors

**Site Tour Information** Site tours by appointment only

780.421.4000 | [leasing@yorkrealty.ca](mailto:leasing@yorkrealty.ca) | **YORKREALTY.CA**

Canadian Western Bank Place  
Suite 1600, 10303 Jasper Avenue  
Edmonton, Alberta | T5J 3N6





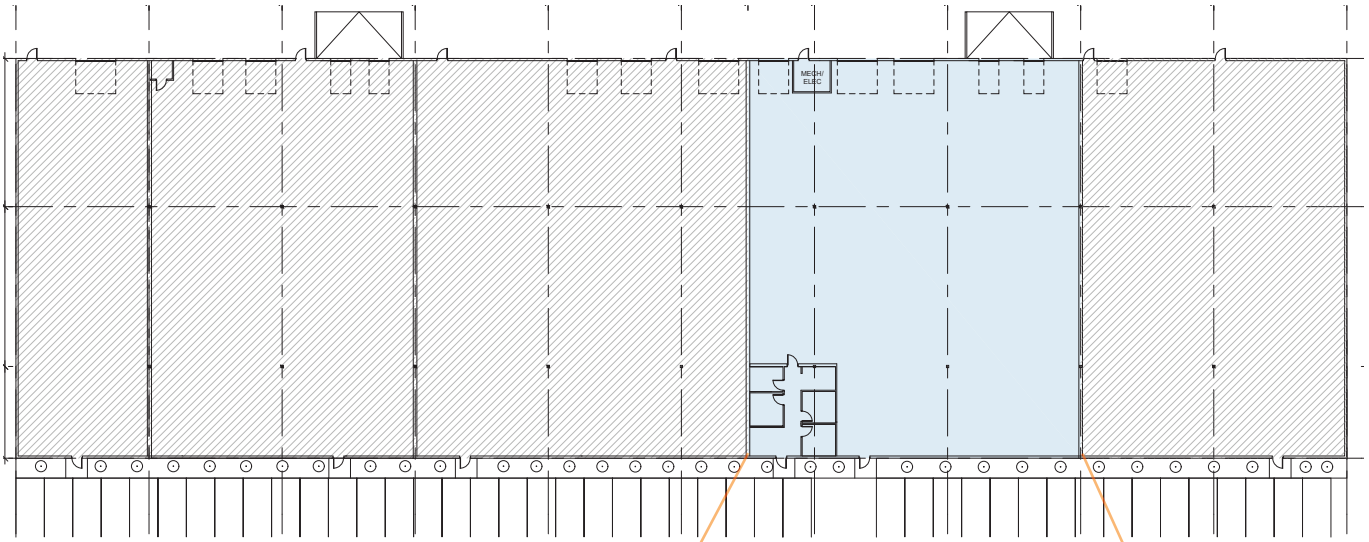
DETAILS

ADDRESS	Unit 5 - 2915 10 Avenue
SIZE	11,800 SF
CLEAR HEIGHT	24'
LOADING	Three (3) Drive-In, Two (2) Dock Doors
LIGHTING	LED

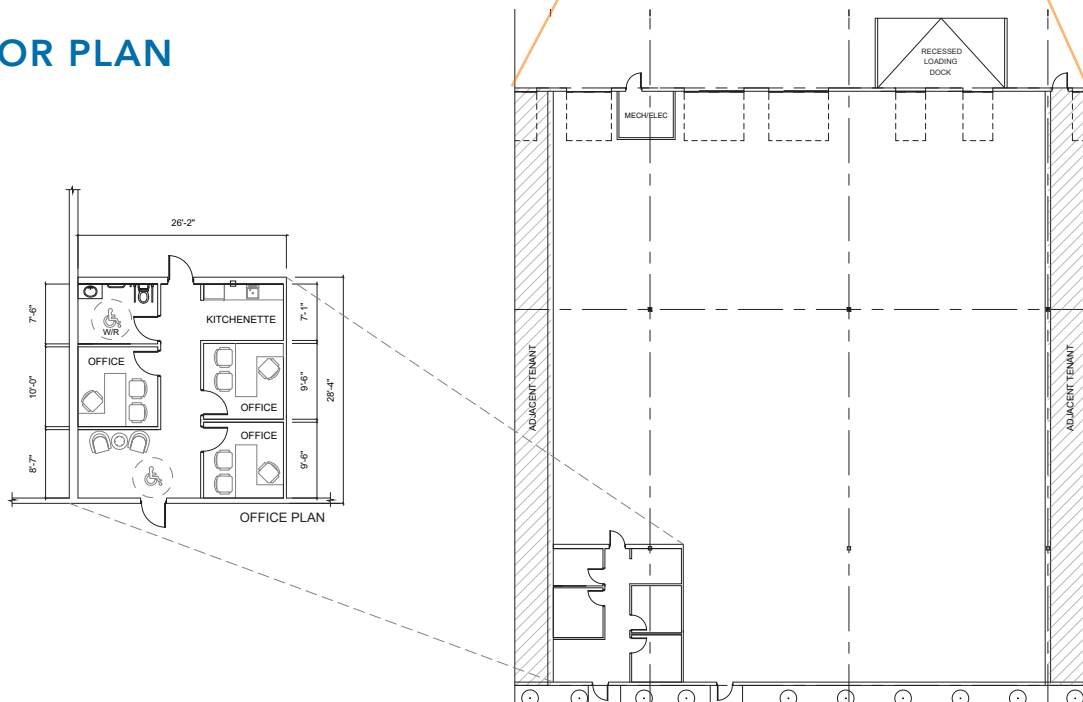
LEASING INFORMATION

BASE RENT	Market
OP COSTS	\$5.18 PSF (2022 est)
AVAILABILITY	Immediately

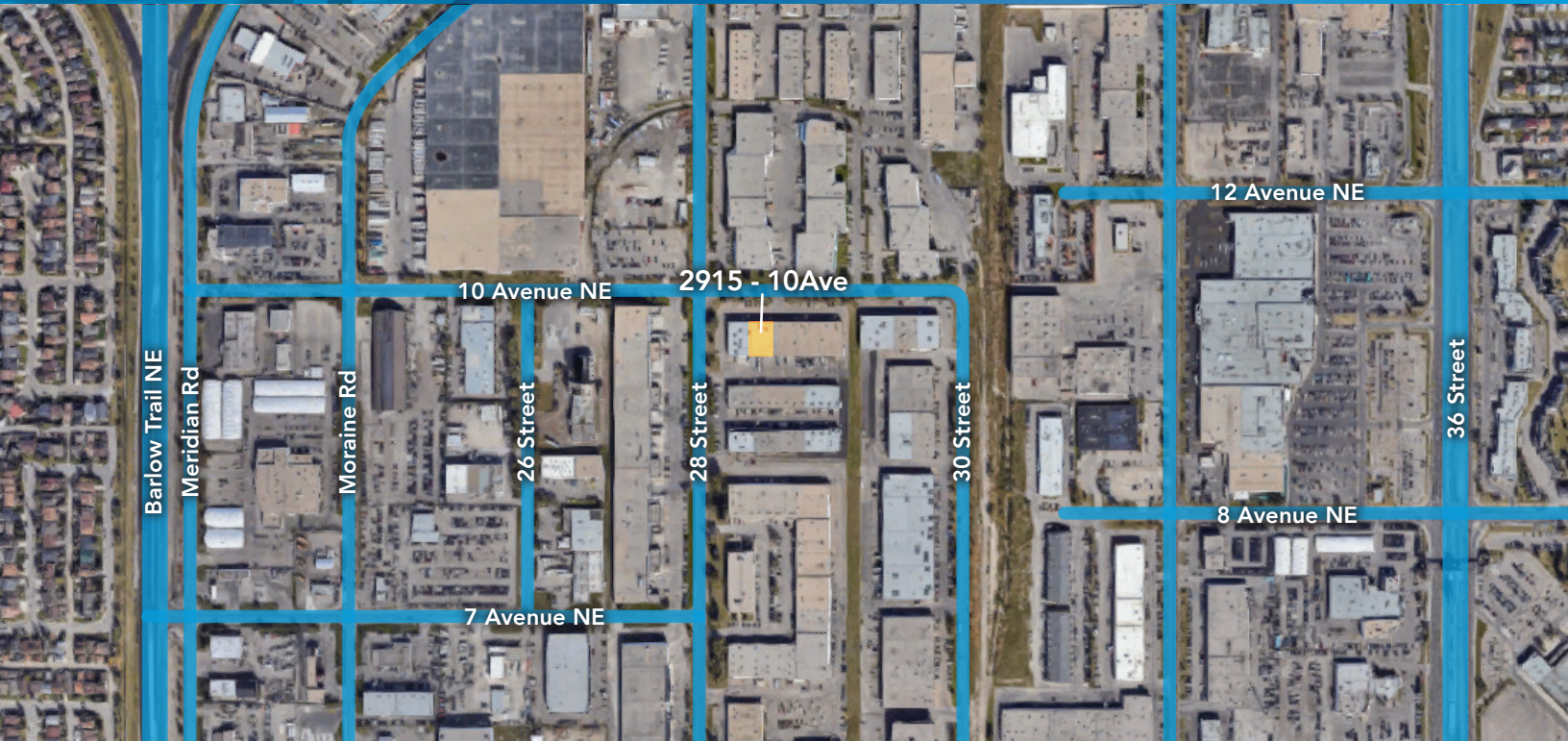
## SITE PLAN



## FLOOR PLAN







**Site Tour Information** Site tours by appointment only

780.421.4000 | [leasing@yorkrealty.ca](mailto:leasing@yorkrealty.ca) | [YORKREALTY.CA](http://YORKREALTY.CA)

Canadian Western Bank Place

Suite 1600, 10303 Jasper Avenue  
Edmonton, Alberta | T5J 3N6