



PROPERTY HIGHLIGHTS

- 2,400 SF Available
- Mezzanine
- Drive-in Loading Door
- 2 Bathrooms

Site Tour Information Site tours by appointment only

780.421.4000 | leasing@yorkrealty.ca | YORKREALTY.CA

Canadian Western Bank Place
Suite 1600, 10303 Jasper Avenue
Edmonton, Alberta | T5J 3N6



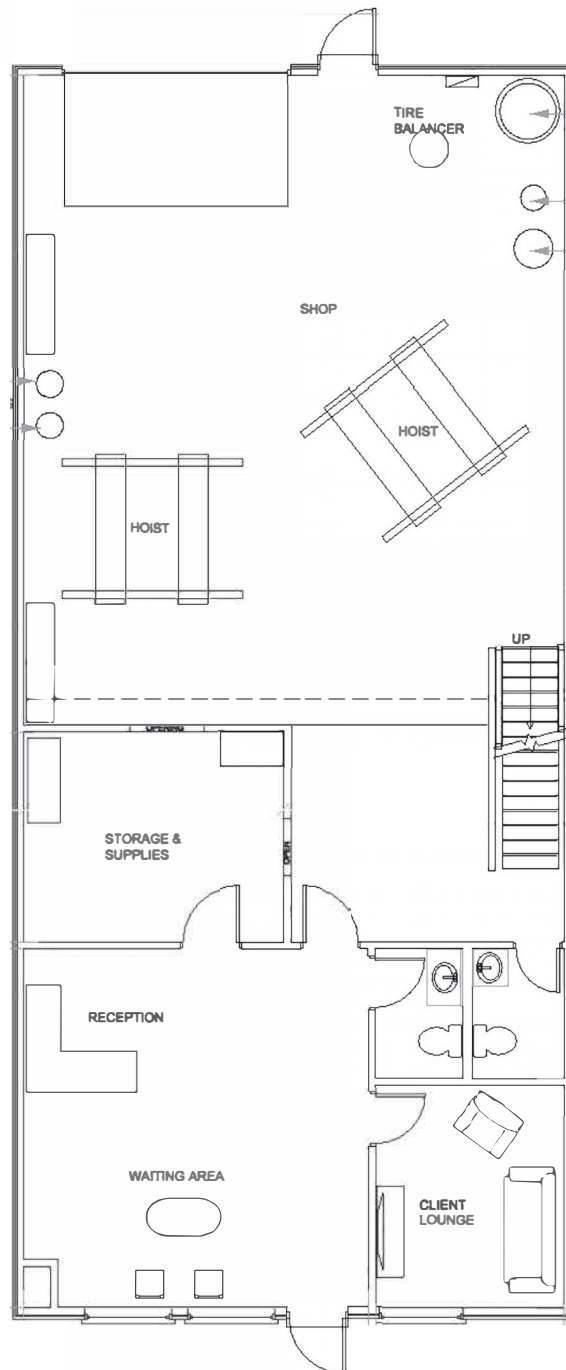
DETAILS

ADDRESS	Unit 6 - 920 28 Street NE
SIZE	2,400 SF
BATHROOMS	2
LOADING	One (1) Drive-In Door
ELECTRICAL	200 Amps

LEASING INFORMATION

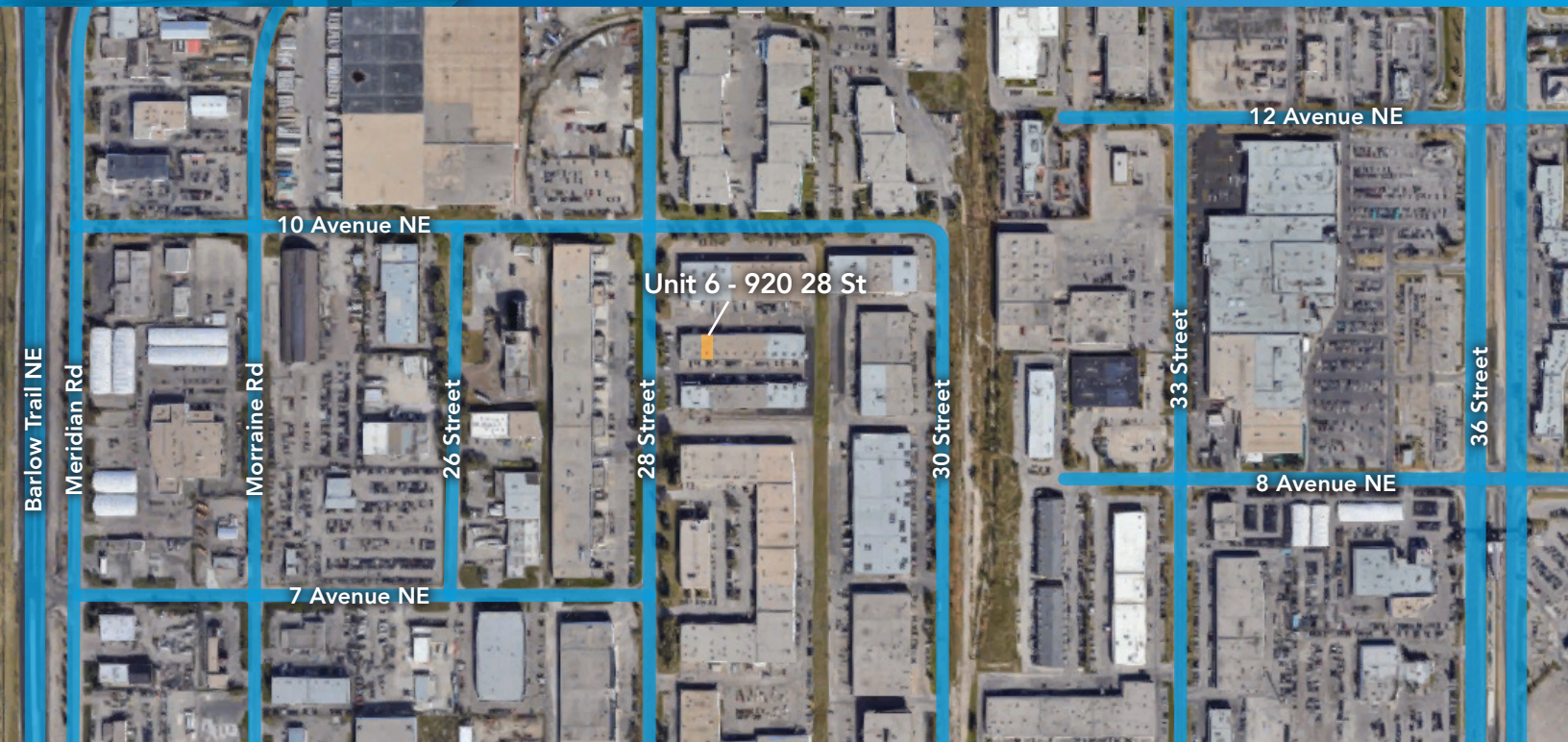
BASE RENT	Market
OP COSTS	\$5.55 PSF (2022 est)
AVAILABILITY	Immediately

FLOOR PLAN



UNIT 6 - 920 28 Street NE

Calgary, Alberta



Site Tour Information Site tours by appointment only

780.421.4000 | leasing@yorkrealty.ca | YORKREALTY.CA

Canadian Western Bank Place

Suite 1600, 10303 Jasper Avenue
Edmonton, Alberta | T5J 3N6