

Aspen Park - 1516 Railway Avenue

Canmore, Alberta



PROPERTY HIGHLIGHTS

- In the heart of Canmore
- Easy access to Highway 1
- 5,720 SF Available
- Available September 1, 2021

Site Tour Information Site tours by appointment only

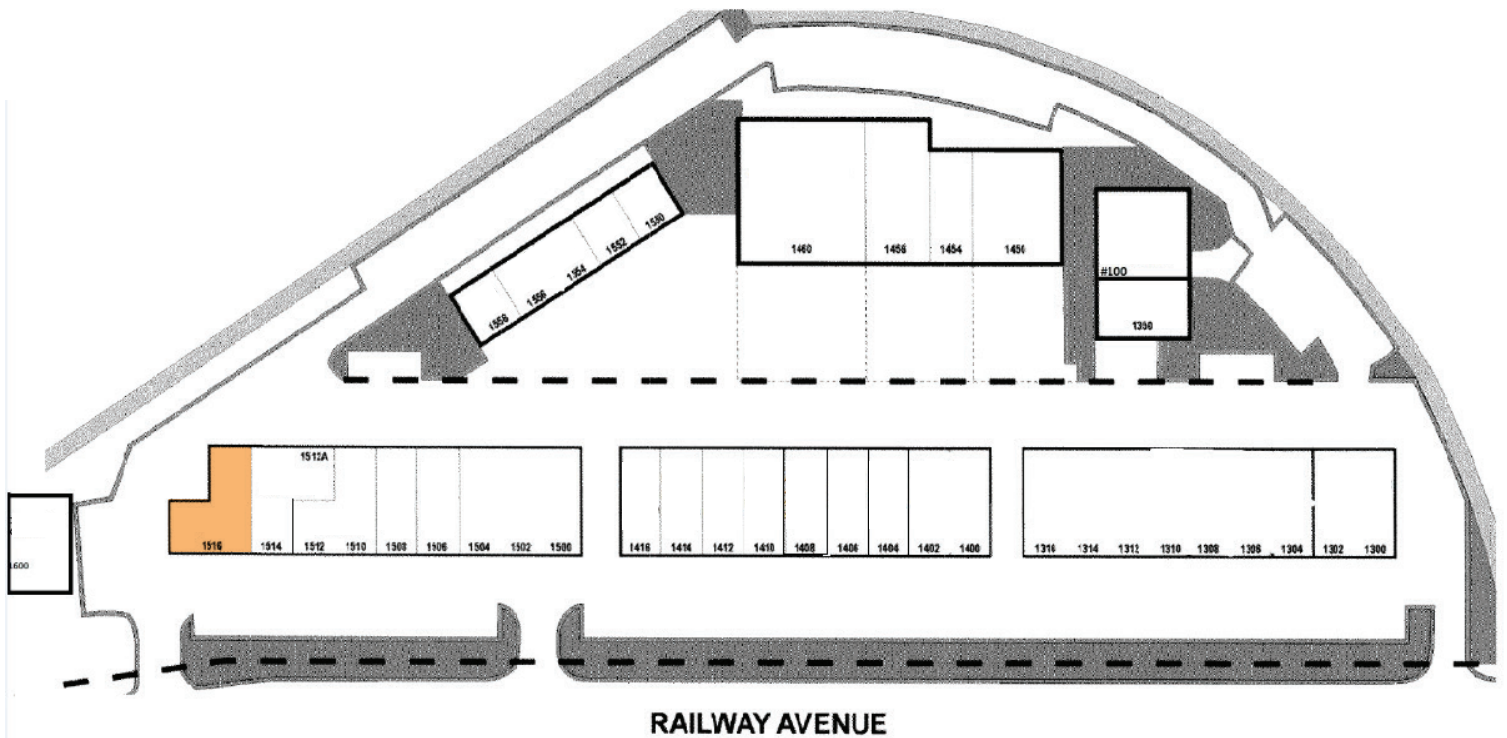
Andrew Rudzitis | Leasing Manager
587.572.3175 | andrew@yorkrealty.ca

1206 20 Avenue SE
Calgary, AB T2G 1M8

YORKREALTY.CA

Aspen Park - 1516 Railway Avenue

Canmore, Alberta



DETAILS

Address	1516 Railway Avenue
Size	5,720 SF
Zoning	Retail / Industrial
Heating	Unit heaters & furnace
Lighting	To be upgraded to LED
Parking	Lots of parking through entire complex
Loading	One (1) 12'x14' Grade door
Power	600 Amps / 600 Volts to be confirmed by tenant

LEASE INFORMATION

Basic Rent	Market
Operating Costs	\$1.05 PSF (2021 est)
Available	September 1, 2021

Site Tour Information

Site tours by appointment only

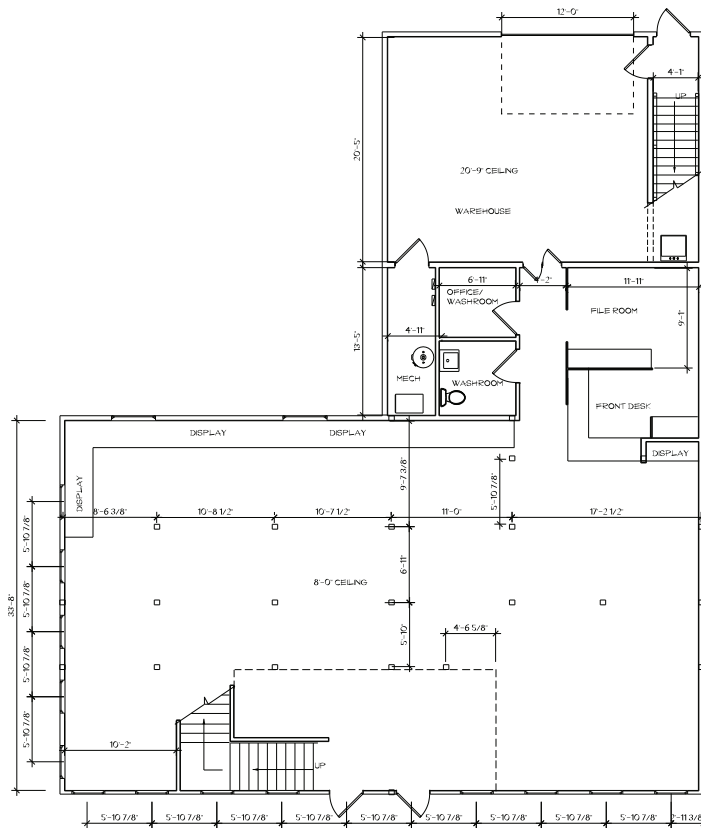
Andrew Rudzitis | Leasing Manager

587.572.3175 | andrew@yorkrealty.ca

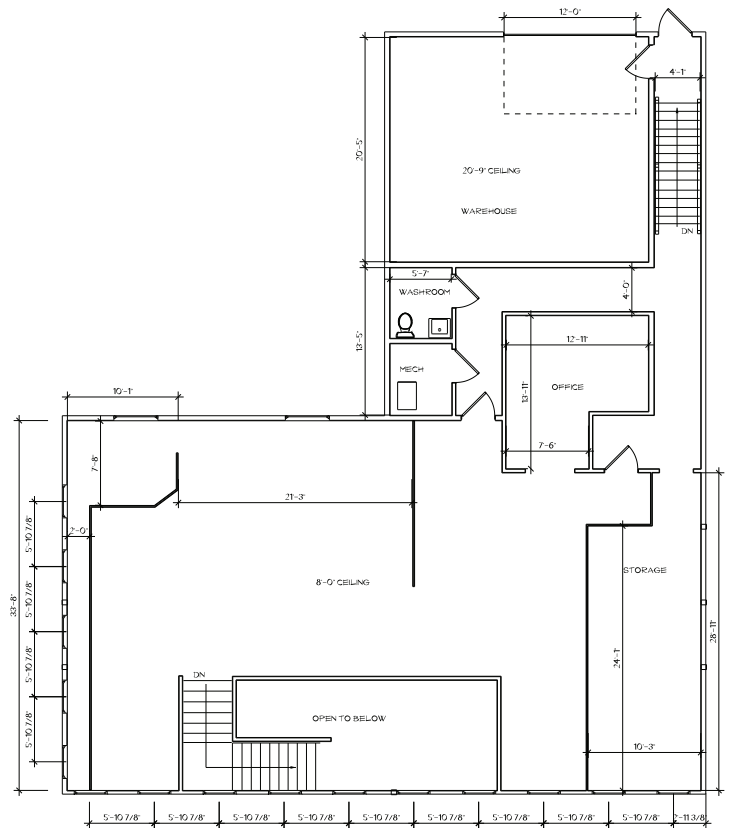
1206 20 Avenue SE
Calgary, AB T2G 1M8

YORKREALTY.CA

1st FLOOR PLAN



2nd FLOOR PLAN



Site Tour Information Site tours by appointment only

Andrew Rudzitis | Leasing Manager
587.572.3175 | andrew@yorkrealty.ca

1206 20 Avenue SE
Calgary, AB T2G 1M8

YORKREALTY.CA

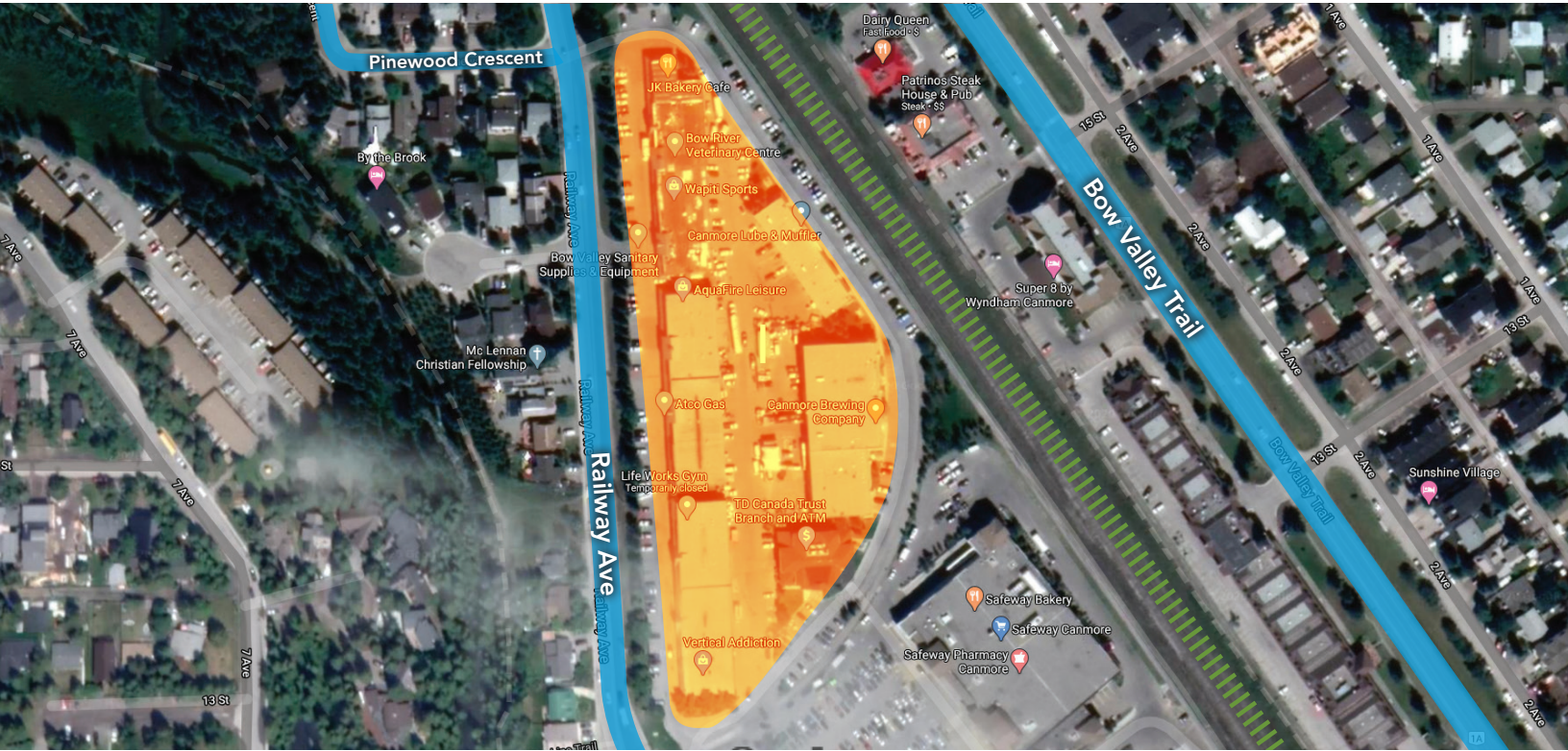
Available For Lease



INDUSTRIAL OFFICE & WAREHOUSE OPPORTUNITY

Aspen Park - 1516 Railway Avenue

Canmore, Alberta



Site Tour Information

Site tours by appointment only

Andrew Rudzitis | Leasing Manager

587.572.3175 | andrew@yorkrealty.ca

1206 20 Avenue SE
Calgary, AB T2G 1M8

YORKREALTY.CA