

Whitemud Center - 4120 101 St NW*Edmonton, Alberta*

PROPERTY HIGHLIGHTS

- Tenant inducement package for a full warehouse conversion
- Exposure to Gateway Blvd
- Quick access to the Whitemud, Gateway Blvd & Calgary Trail
- Potential for up to 1 acre of yard
- Fully renovated warehouse
- Ample paved parking
- Ability to add up to 4 dock doors
- Fiber optics available

Site Tour Information

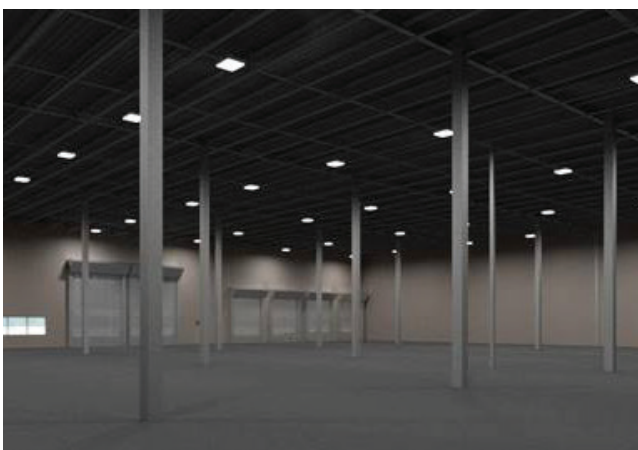
*Site tours by appointment only***Miguel Martinez | Special Projects Manager**780.421.4000 | miguel@yorkrealty.ca | **YORKREALTY.CA****Canadian Western Bank Place**

Suite 1622, 10303 Jasper Avenue

Edmonton, Alberta | T5J 3N6

Whitemud Center - 4120 101 St NW

Edmonton, Alberta



DETAILS

Address	4120 101 Street NW
Legal Description	Lot 1, Block 1, Plan 4984NY
Zoning	Industrial Business Zone (IB)
Construction	Centre block / steel frame
First Floor	30,007 SF
Second Floor	4,833 SF free of charge
Clear Height	24'
Grade Loading	One (1) 10' x 14'
Dock Loading	Four (4) doors
Heating	Unit heaters and HVAC
Lighting	LED
Power	400 amps & 600 Volts
Sprinklers	Yes
Fiber Optics	Yes
Yard	Yes
Make Up Air Unit	Available

LEASE INFORMATION

Lease Rate	Market
Operating Costs	\$3.98 PSF (est. 2020)
Available	60 Day Notice

Site Tour Information

Site tours by appointment only

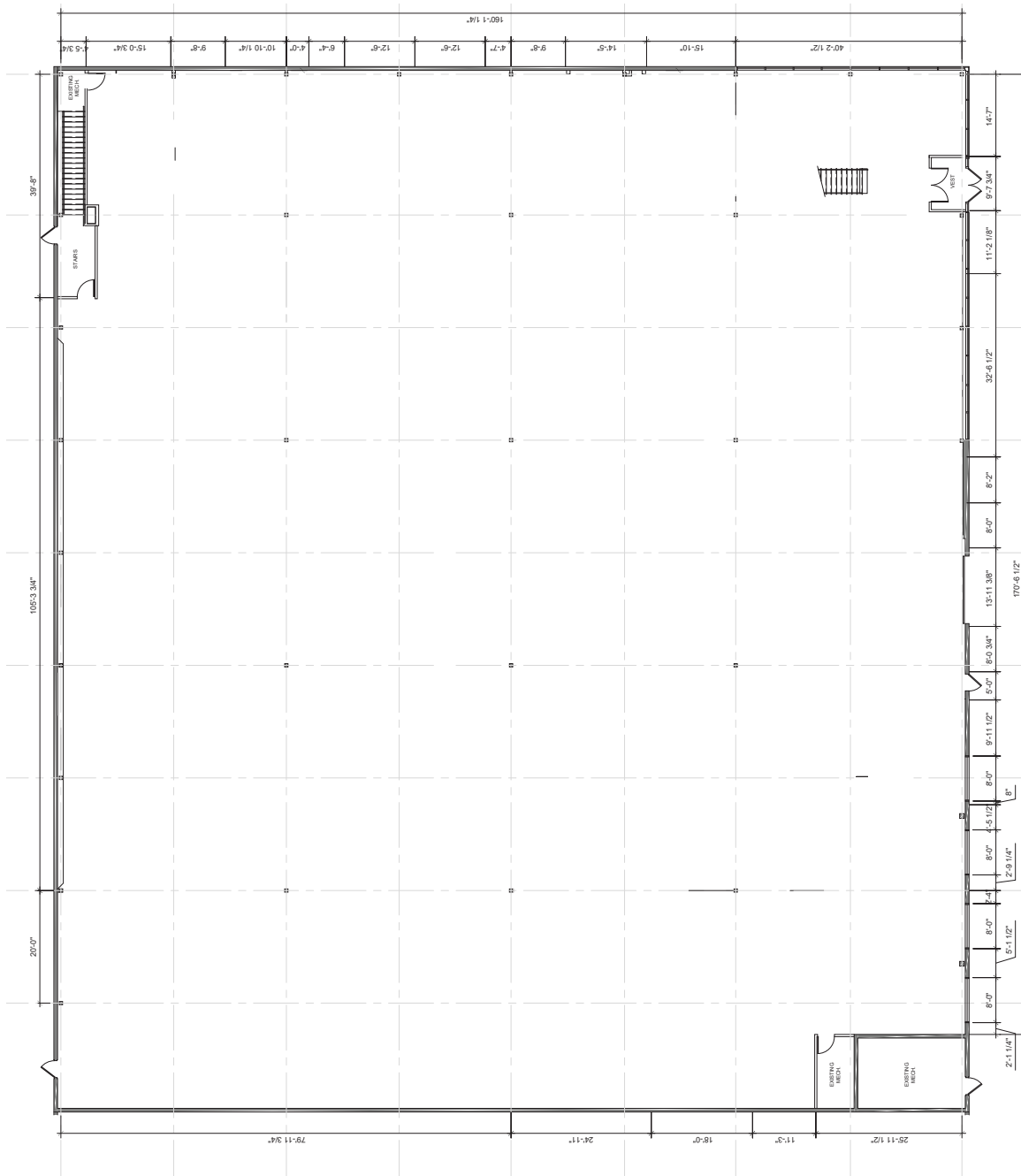
Miguel Martinez | Special Projects Manager

780.421.4000 | miguel@yorkrealty.ca | [YORKREALTY.CA](https://www.yorkrealty.ca)

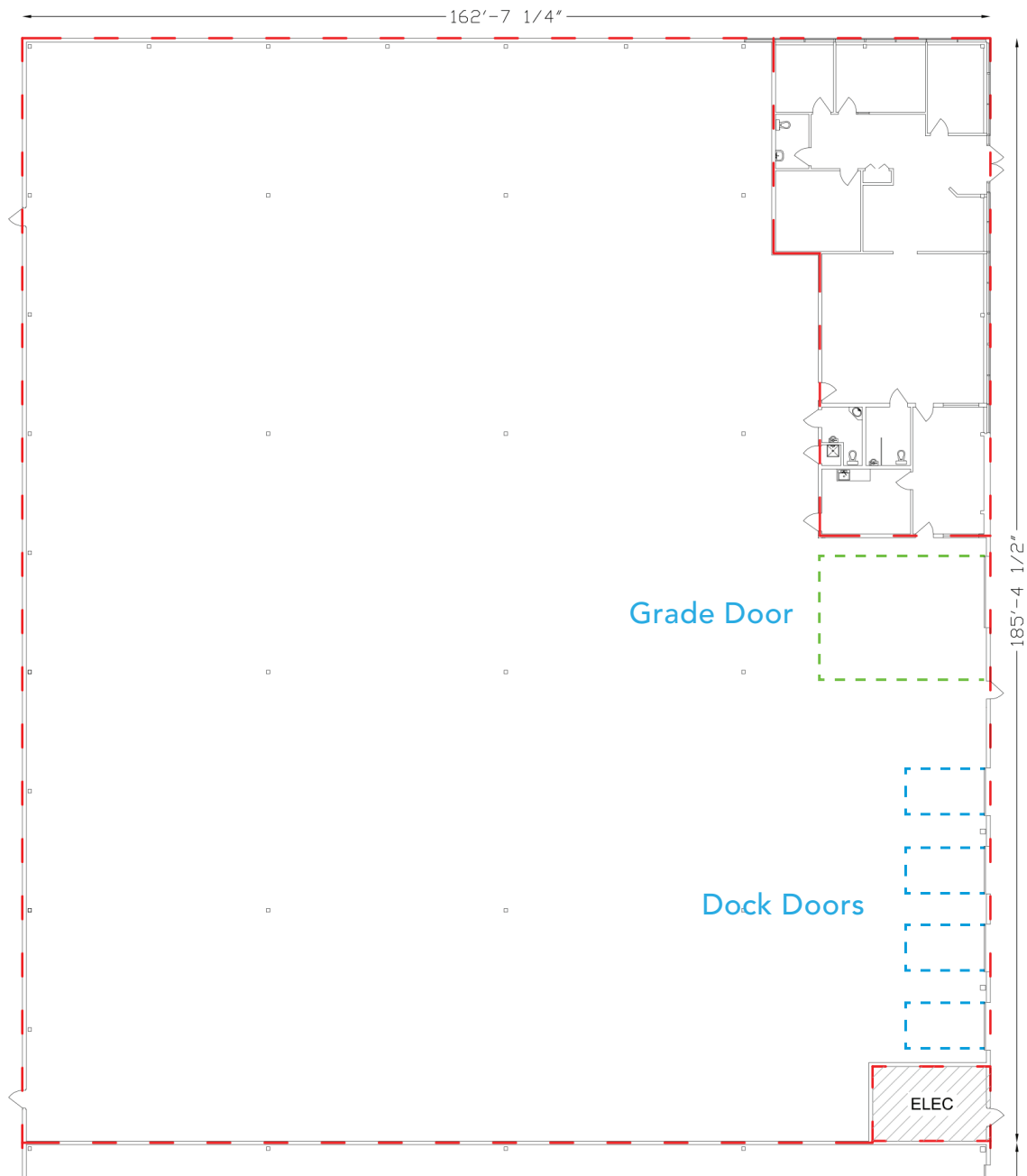
Canadian Western Bank Place

Suite 1622, 10303 Jasper Avenue
Edmonton, Alberta | T5J 3N6

Current Floor Plan

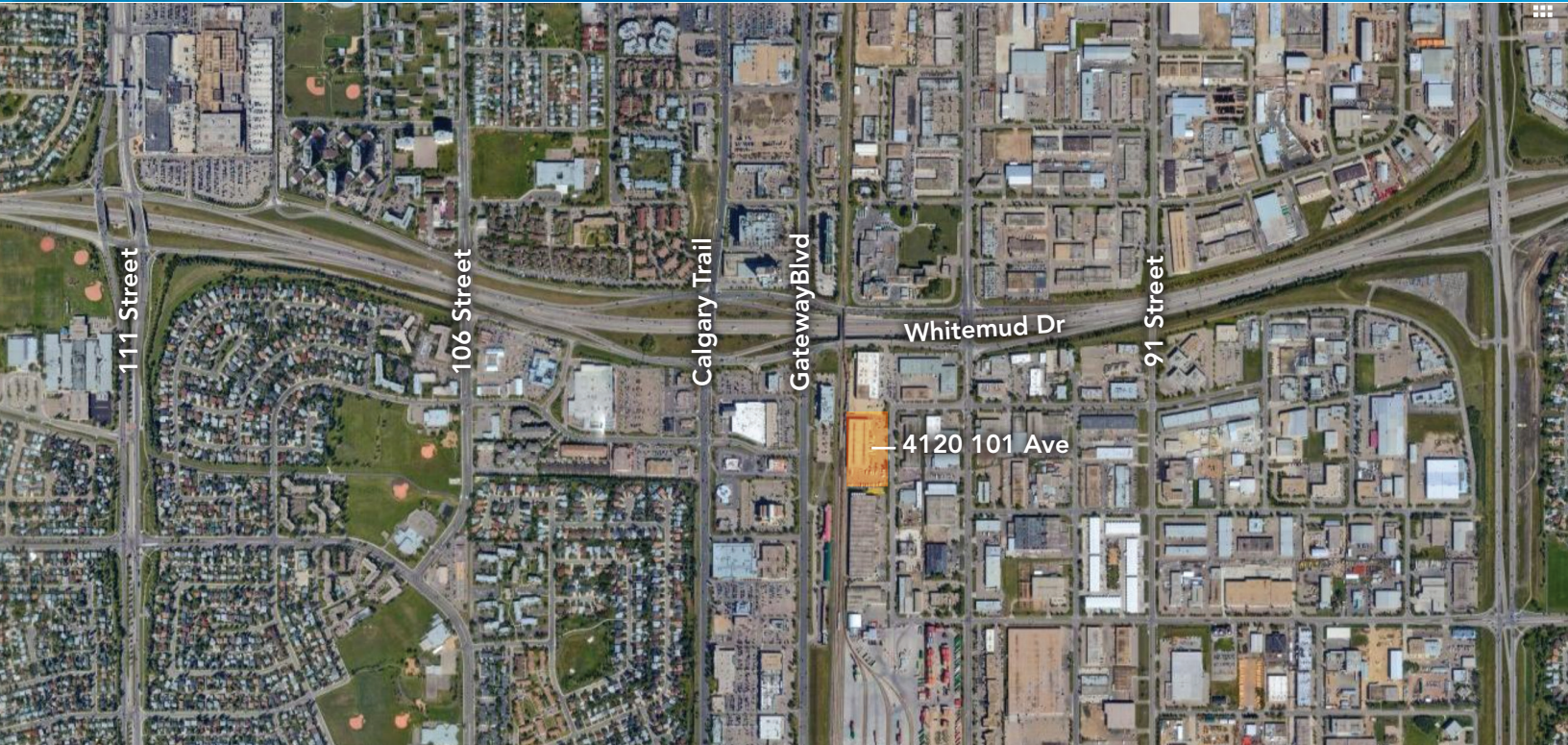


Proposed Floor Plan



Whitemud Center - 4120 101 St NW

Edmonton, Alberta



Site Tour Information

Site tours by appointment only

Miguel Martinez | Special Projects Manager

780.421.4000 | miguel@yorkrealty.ca | YORKREALTY.CA

Canadian Western Bank Place

Suite 1622, 10303 Jasper Avenue
Edmonton, Alberta | T5J 3N6