

Bonaventure Building 14604 134 Avenue

Edmonton, Alberta



PROPERTY HIGHLIGHTS

- Manufacturing/Distribution space within the Bonaventure Business Park with easy access to St. Albert Trail, the Yellowhead Highway, and the Henday
- 58,515 SF of warehouse/showroom space
- Turn-key improvements available
- Available October 1, 2022

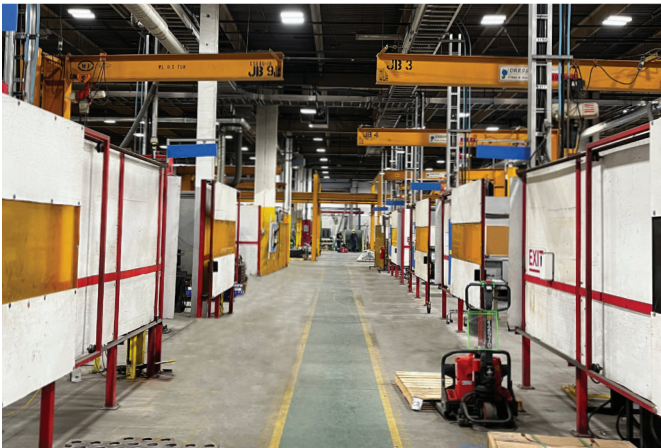
Site Tour Information Site tours by appointment only

Lucas Leisen | Leasing Manager 780.934.2929 | lucas@yorkrealty.ca
YORKREALTY.CA

Canadian Western Bank Place
Suite 1600, 10303 Jasper Avenue
Edmonton, Alberta | T5J 3N6

Bonaventure Building 14604 134 Avenue

Edmonton, Alberta



DETAILS

Type	Industrial Showroom/ Warehouse
Zoning	(IB) Industrial Business Zone
Year Built	1979
Ceiling Height	22' Clear
Total Vacant	58,515 SF
Power	400 Amps / 600 Volts
HVAC	Unit heaters and roof top units
Heating	Roof top units
Lighting	To be upgraded to LED
Fiber Optics	Available
Loading	Sixteen (16) loading doors Four (4) Overhead grade doors Twelve (12) Dock Loading Doors

LEASE INFORMATION

Operating Costs	\$4.23 PSF (est. 2022)
Base Rent	Market
Available	October 1, 2022

Site Tour Information

Site tours by appointment only

Lucas Leisen | Leasing Manager 780.934.2929 | lucas@yorkrealty.ca

YORKREALTY.CA

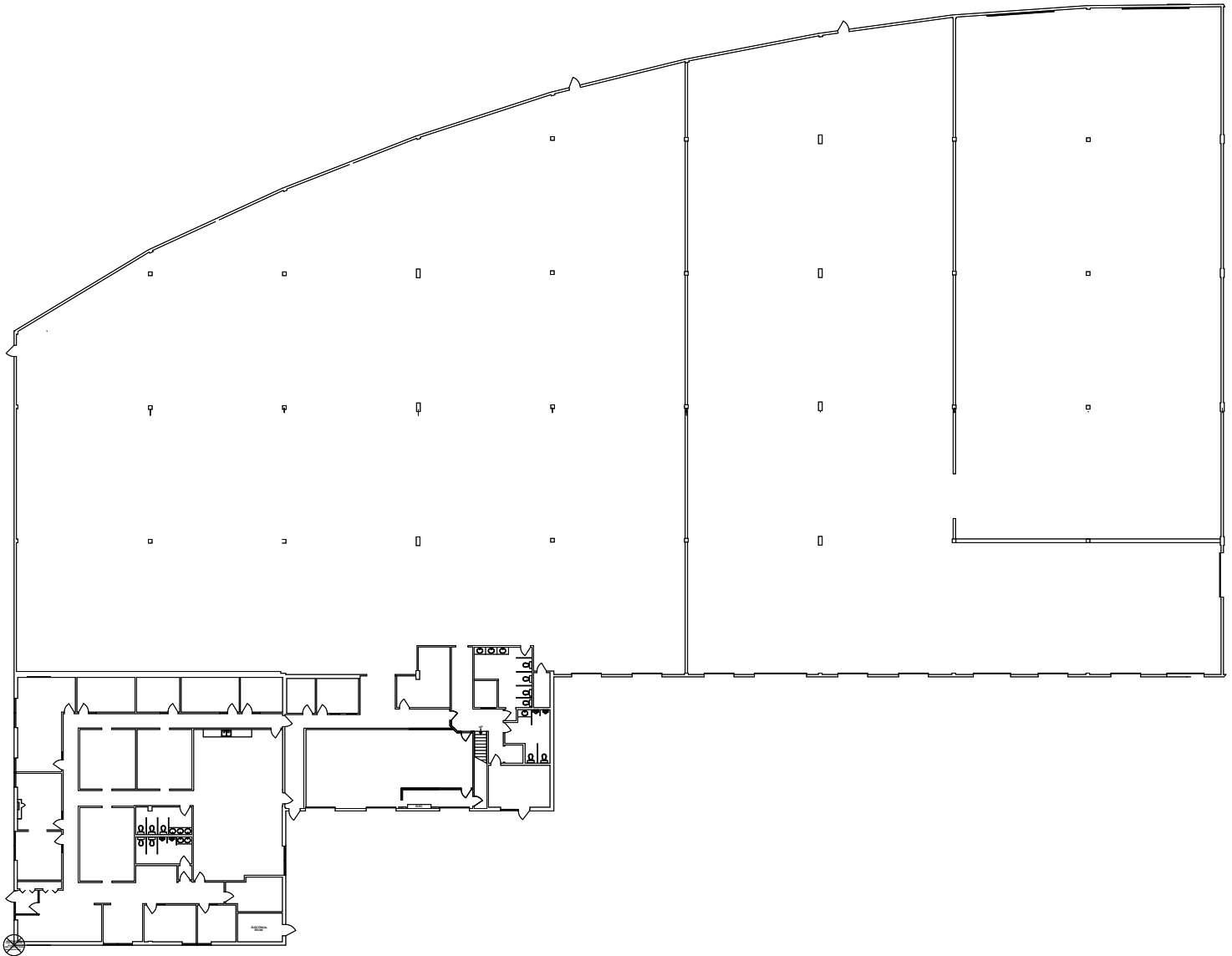
Canadian Western Bank Place

Suite 1600, 10303 Jasper Avenue
Edmonton, Alberta | T5J 3N6

Bonaventure Building 14604 134 Avenue

Edmonton, Alberta

FLOOR PLAN



Bonaventure Building 14604 134 Avenue

Edmonton, Alberta



Site Tour Information

Site tours by appointment only

Lucas Leisen | Leasing Manager 780.934.2929 | lucas@yorkrealty.ca

YORKREALTY.CA

Canadian Western Bank Place

Suite 1600, 10303 Jasper Avenue
Edmonton, Alberta | T5J 3N6