

Santa Fe Plaza - 18116 102 Avenue NW

Edmonton, Alberta



PROPERTY HIGHLIGHTS

- Located in the Santa Fe Plaza in Northwest Edmonton
- Well-maintained and nicely landscaped plaza
- Great access to 184 Street, Stony Plain Road and the Anthony Henday
- Available Immediately

Site Tour Information Site tours by appointment only

Lucas Leisen | Leasing Manager 780.934.2929 | lucas@yorkrealty.ca
YORKREALTY.CA

Canadian Western Bank Place
Suite 1622, 10303 Jasper Avenue
Edmonton, Alberta | T5J 3N6

Santa Fe Plaza - 18116 102 Avenue NW

Edmonton, Alberta



DETAILS

Building	Santa Fe
Year Built	1989
Address	18116 - 102 Ave NW
Total Vacant	2,390 SF
Zoning	DC2 Site Specific Development Control Provision
Power	To Be Confirmed
Parking	Dedicated stalls in front of space
Lighting	To be upgraded to LED
Clear Height	14'
Loading	One (1) Grade Loading

LEASE INFORMATION

Operating Costs	\$6.06 PSF (est. 2023)
Lease Rate	Market
Available	Immediately

Site Tour Information

Site tours by appointment only

Lucas Leisen | Leasing Manager 780.934.2929 | lucas@yorkrealty.ca

YORKREALTY.CA

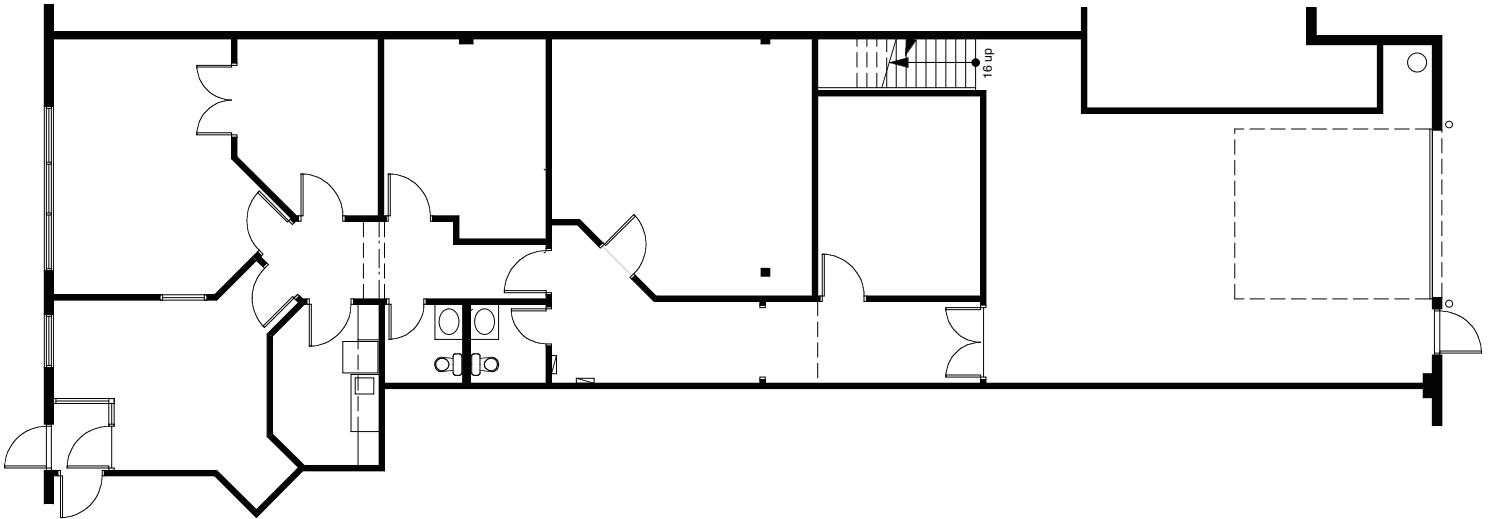
Canadian Western Bank Place

Suite 1622, 10303 Jasper Avenue
Edmonton, Alberta | T5J 3N6

Santa Fe Plaza - 18116 102 Avenue NW

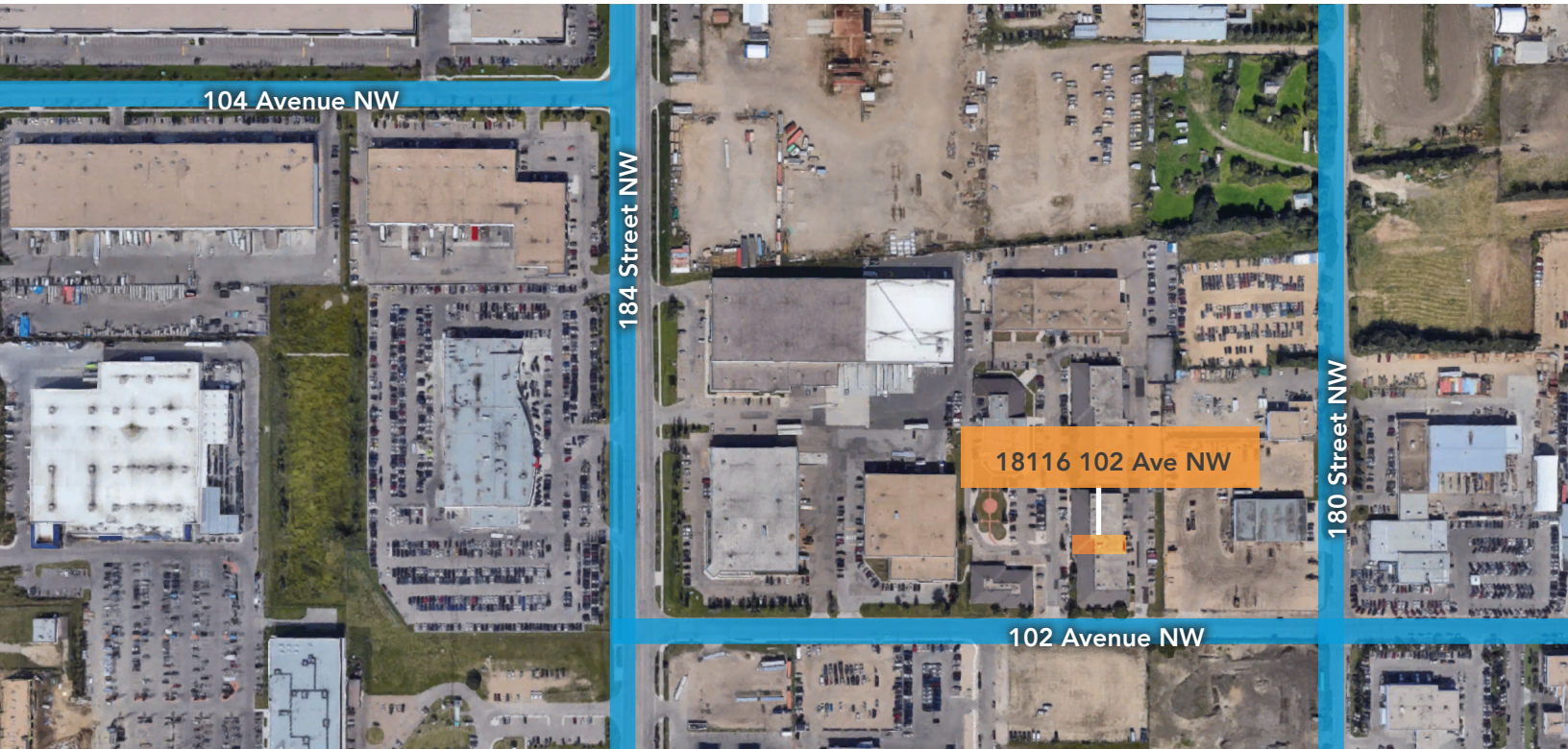
Edmonton, Alberta

FLOOR PLAN



Santa Fe Plaza - 18116 102 Avenue NW

Edmonton, Alberta



Site Tour Information

Site tours by appointment only

Lucas Leisen | Leasing Manager 780.934.2929 | lucas@yorkrealty.ca

YORKREALTY.CA

Canadian Western Bank Place

Suite 1622, 10303 Jasper Avenue
Edmonton, Alberta | T5J 3N6