

Santa Fe Plaza - 18120 102 Avenue NW

Edmonton, Alberta



PROPERTY HIGHLIGHTS

- Located in the Santa Fe Plaza in Northwest Edmonton
- Well-maintained and nicely landscaped plaza
- Great access to 184 Street, Stony Plain Road and the Anthony Henday
- 4,993 SF Available
- Available August 1, 2023

Site Tour Information

Site tours by appointment only

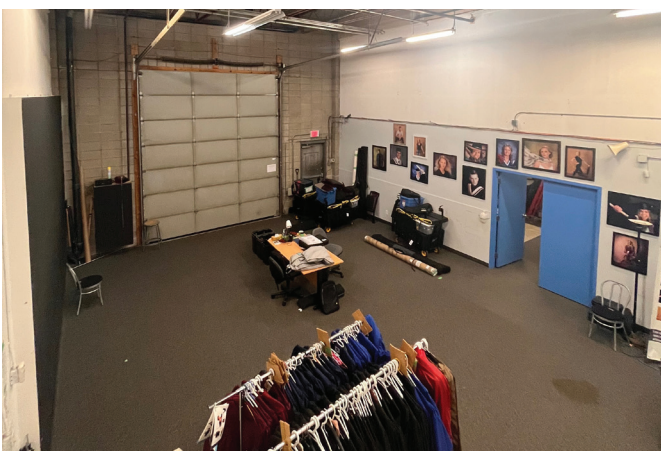
Lucas Leisen | Leasing Manager 780.934.2929 | lucas@yorkrealty.ca
YORKREALTY.CA

Canadian Western Bank Place

Suite 1600, 10303 Jasper Avenue
Edmonton, Alberta | T5J 3N6

Santa Fe Plaza - 18120 102 Avenue NW

Edmonton, Alberta



DETAILS

Building	Santa Fe
Year Built	1989
Address	18120 - 102 Ave NW
Total Vacant	4,993 SF
Zoning	DC2 (Site Specific Development Control Provision)
Power	To be confirmed
Lighting	To be upgraded to LED
Loading	2 Grade doors
Parking	Dedicated stalls in front of space
Clear Height	14'

LEASE INFORMATION

Operating Costs	\$6.06 PSF (est. 2023)
Lease Rate	Market
Available	August 1, 2023

Site Tour Information

Site tours by appointment only

Lucas Leisen | Leasing Manager 780.934.2929 | lucas@yorkrealty.ca

YORKREALTY.CA

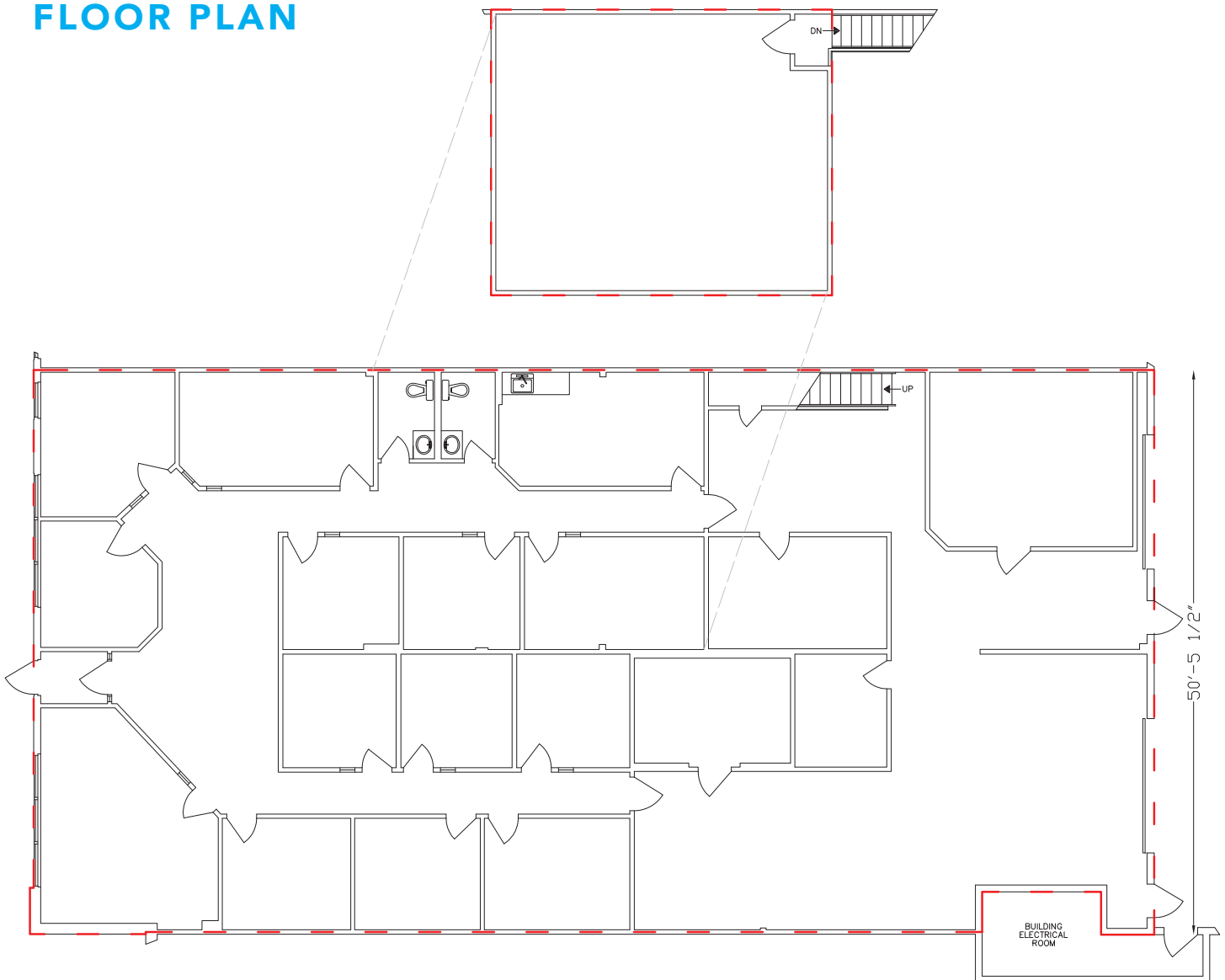
Canadian Western Bank Place

Suite 1600, 10303 Jasper Avenue
Edmonton, Alberta | T5J 3N6

Santa Fe Plaza - 18120 102 Avenue NW

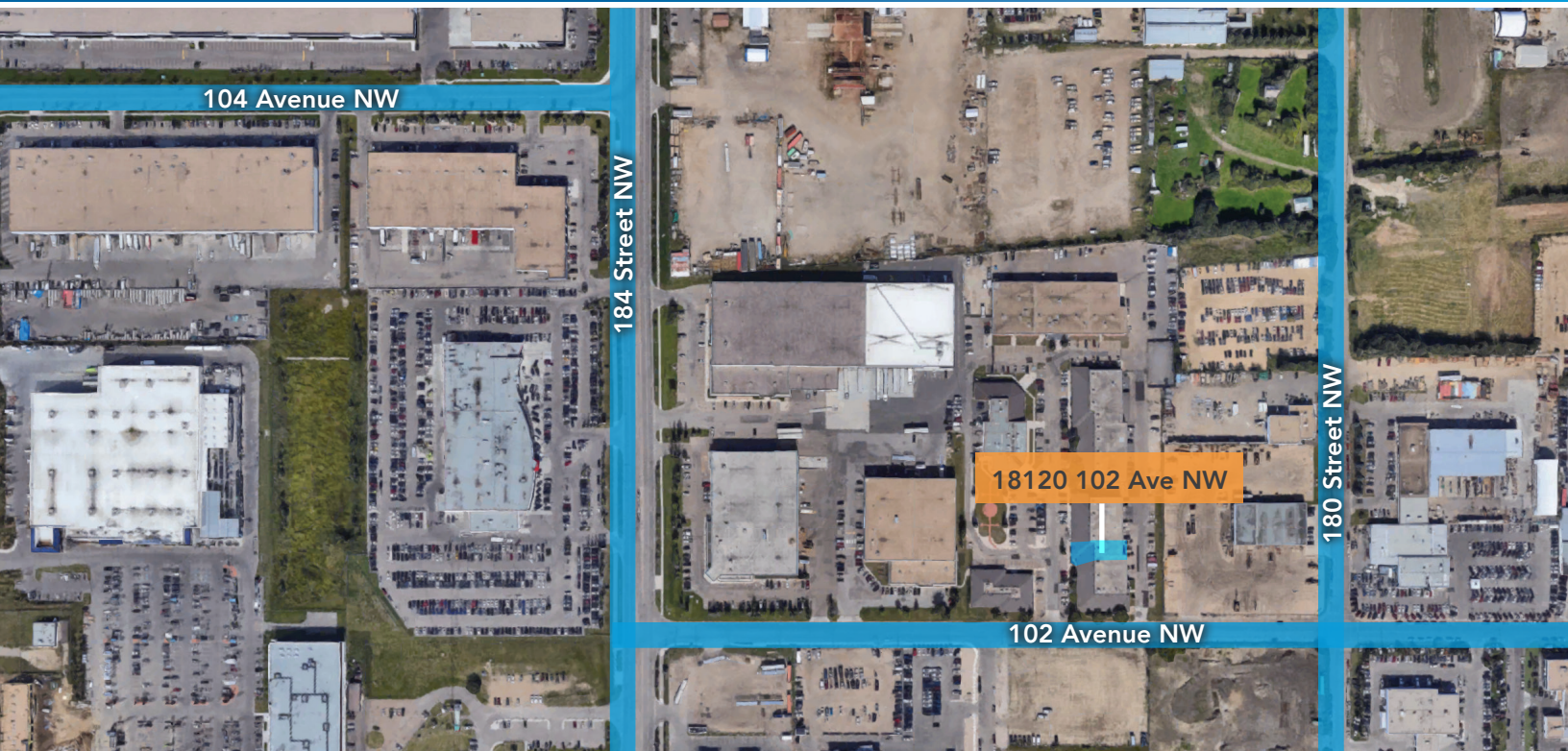
Edmonton, Alberta

FLOOR PLAN



Santa Fe Plaza - 18120 102 Avenue NW

Edmonton, Alberta



Site Tour Information

Site tours by appointment only

Lucas Leisen | Leasing Manager 780.934.2929 | lucas@yorkrealty.ca

YORKREALTY.CA

Canadian Western Bank Place

Suite 1600, 10303 Jasper Avenue
Edmonton, Alberta | T5J 3N6