

Santa Fe Plaza - 18178 102 Avenue NW

Edmonton, Alberta



PROPERTY HIGHLIGHTS

- Located in the Santa Fe Plaza in Northwest Edmonton
- Well-maintained and nicely landscaped plaza
- Great access to 184 Street, Stony Plain Road and the Anthony Henday
- 11,500 SF Available
- Available Immediately

Site Tour Information

Site tours by appointment only

Miguel Martinez | Edmonton Leasing Manager 780-729-4583 | miguel@yorkrealty.ca

Lucas Leisen | Leasing Administrator 780.934.2929 | lucas@yorkrealty.ca

YORKREALTY.CA

Canadian Western Bank Place

Suite 1600, 10303 Jasper Avenue

Edmonton, Alberta | T5J 3N6

Santa Fe Plaza - 18178 102 Avenue NW

Edmonton, Alberta



DETAILS

Building	Santa Fe
Year Built	1990
Address	18178 - 102 Ave NW
Total Vacant	11,500 SF
Min Contiguous	3,995 SF
Zoning	DC
Heating	Roof Top Units
Lighting	LED
Fiber	Yes
Sprinklers	Yes
Parking	Dedicated stalls in front of space; scramble parking throughout the complex

LEASE INFORMATION

Operating Costs	\$5.50 PSF (est. 2022)
Lease Rate	Market
Available	Immediately

Site Tour Information

Site tours by appointment only

Miguel Martinez | Edmonton Leasing Manager 780-729-4583 | miguel@yorkrealty.ca

Lucas Leisen | Leasing Administrator 780.934.2929 | lucas@yorkrealty.ca

YORKREALTY.CA

Canadian Western Bank Place

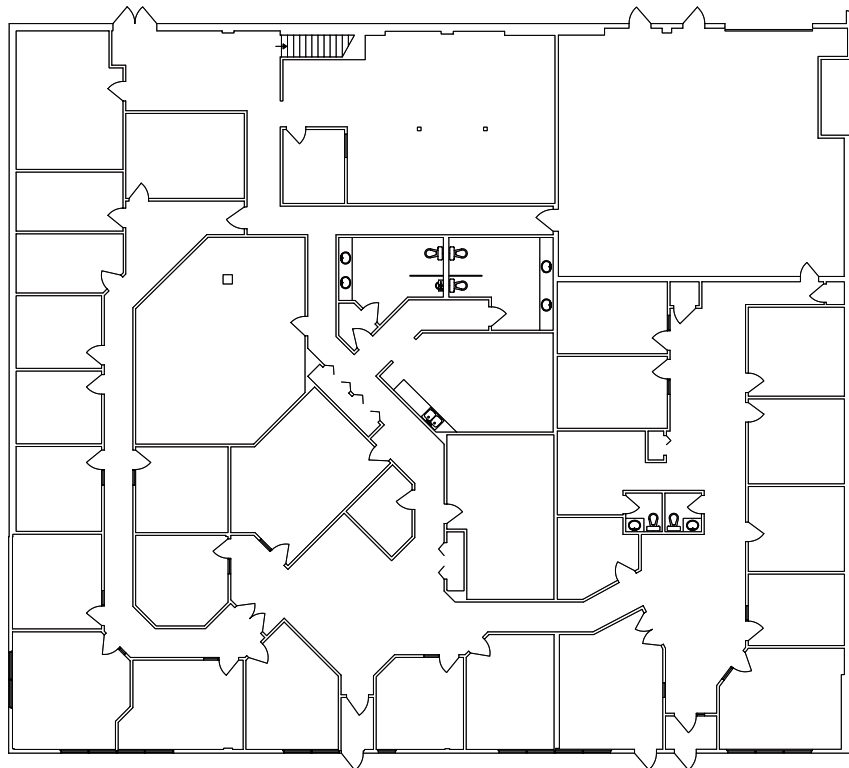
Suite 1600, 10303 Jasper Avenue

Edmonton, Alberta | T5J 3N6

Santa Fe Plaza - 18178 102 Avenue NW

Edmonton, Alberta

FLOOR PLAN



Santa Fe Plaza - 18178 102 Avenue NW

Edmonton, Alberta



Site Tour Information

Site tours by appointment only

Miguel Martinez | Edmonton Leasing Manager 780-729-4583 | miguel@yorkrealty.ca

Lucas Leisen | Leasing Administrator 780.934.2929 | lucas@yorkrealty.ca

YORKREALTY.CA

Canadian Western Bank Place

Suite 1600, 10303 Jasper Avenue
Edmonton, Alberta | T5J 3N6