

**Santa Fe Plaza - #201, 18216 102 Avenue NW**

Edmonton, Alberta

Landlord will provide  
a fully renovated  
turn key office



## PROPERTY HIGHLIGHTS

- Located in the Santa Fe Plaza in Northwest Edmonton
- Well-maintained and nicely landscaped plaza
- Second floor office space
- Great access to 184 Street, Stony Plain Road and the Anthony Henday
- Elevator
- 3,015 SF of second floor office space
- Available Immediately

## Site Tour Information

Site tours by appointment only

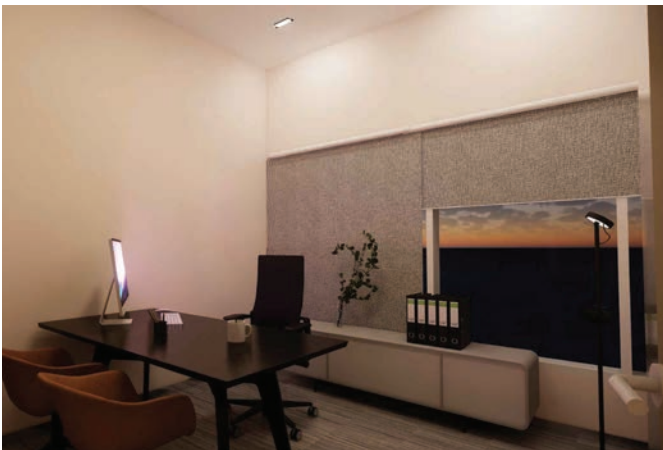
Lucas Leisen | Leasing Manager 780.934.2929 | [lucas@yorkrealty.ca](mailto:lucas@yorkrealty.ca)  
[YORKREALTY.CA](http://YORKREALTY.CA)

Canadian Western Bank Place

Suite 1622, 10303 Jasper Avenue  
Edmonton, Alberta | T5J 3N6

# Santa Fe Plaza - #201, 18216 102 Avenue NW

Edmonton, Alberta



## DETAILS

Building	Santa Fe
Year Built	1990
Product	Second floor office
Address	#201, 18216 - 102 Ave NW
Total Vacant	3,015 SF
Zoning	DC
Heating	HVAC
Lighting	LED
Fiber	Yes
Sprinklers	Yes
Parking	Dedicated stalls in front of space; scramble parking throughout the complex

## LEASE INFORMATION

Operating Costs	\$6.95 PSF (est. 2021)
Lease Rate	\$13.00 PSF
Available	Immediately

## Site Tour Information

Site tours by appointment only

Lucas Leisen | Leasing Manager 780.934.2929 | lucas@yorkrealty.ca

YORKREALTY.CA

Canadian Western Bank Place

Suite 1622, 10303 Jasper Avenue  
Edmonton, Alberta | T5J 3N6

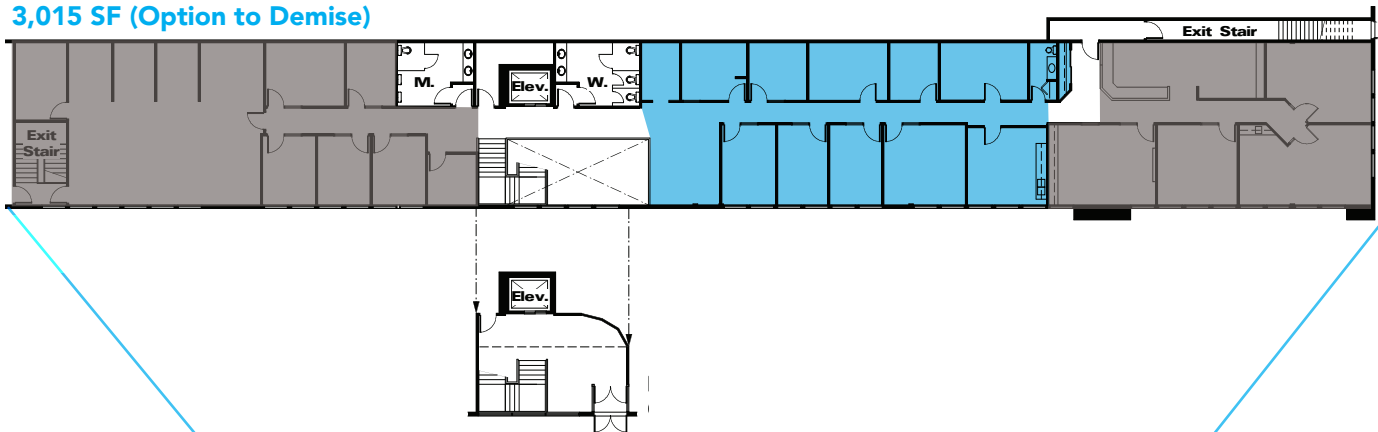


## Santa Fe Plaza - #201, 18216 102 Avenue NW

Edmonton, Alberta

### FLOOR PLAN

**TOTAL VACANT**  
**3,015 SF (Option to Demise)**





## Santa Fe Plaza - #201, 18216 102 Avenue NW

Edmonton, Alberta



### Site Tour Information

Site tours by appointment only

Lucas Leisen | Leasing Manager 780.934.2929 | [lucas@yorkrealty.ca](mailto:lucas@yorkrealty.ca)

[YORKREALTY.CA](http://YORKREALTY.CA)

Canadian Western Bank Place

Suite 1622, 10303 Jasper Avenue  
Edmonton, Alberta | T5J 3N6