



PROPERTY HIGHLIGHTS

- Moving ready
- Turnkey office space
- 1 Acre of fully dedicated yard
- LED lights throughout
- Grade loading
- Located in Nisku Business Park with access at multiple points along 8th Street
- Two jib cranes and one 1-Ton crane
- Locker room area, sump, and warehouse heating available

Site Tour Information

Site tours by appointment only

Miguel Martinez | Special Projects Manager

780.421.4000 | miguel@yorkrealty.ca | [YORKREALTY.CA](https://www.yorkrealty.ca)

Canadian Western Bank Place

Suite 1622, 10303 Jasper Avenue

Edmonton, Alberta | T5J 3N6

GLM Building 1 1504 8 Street

Nisku, Alberta



DETAILS

Address	1 1504 8 Street
Legal Description	Block 7, Lot 13, Plan 0828086
Zoning	(IND) Industrial
Size	11,151 SF
Yard	1 Acre
Power	400 amps & 600 Volts
Clear Height	22'
Cranes	One (1) 1-Ton
Jib Cranes	Two (2)
Air Make Up Unit	10,000 CFM
Grade Loading	Three (3) 16'x16'
Locker Room Area	Available
Sump	Available
Warehouse Heating	Radiant Tube Heat & Unit Heaters

LEASE INFORMATION

Base Rent	\$10.00 PSF
Operating Costs	\$4.94 (2021est) PSF
Utilities	\$2.12 PSF
Available	30 Day Notice

Site Tour Information Site tours by appointment only

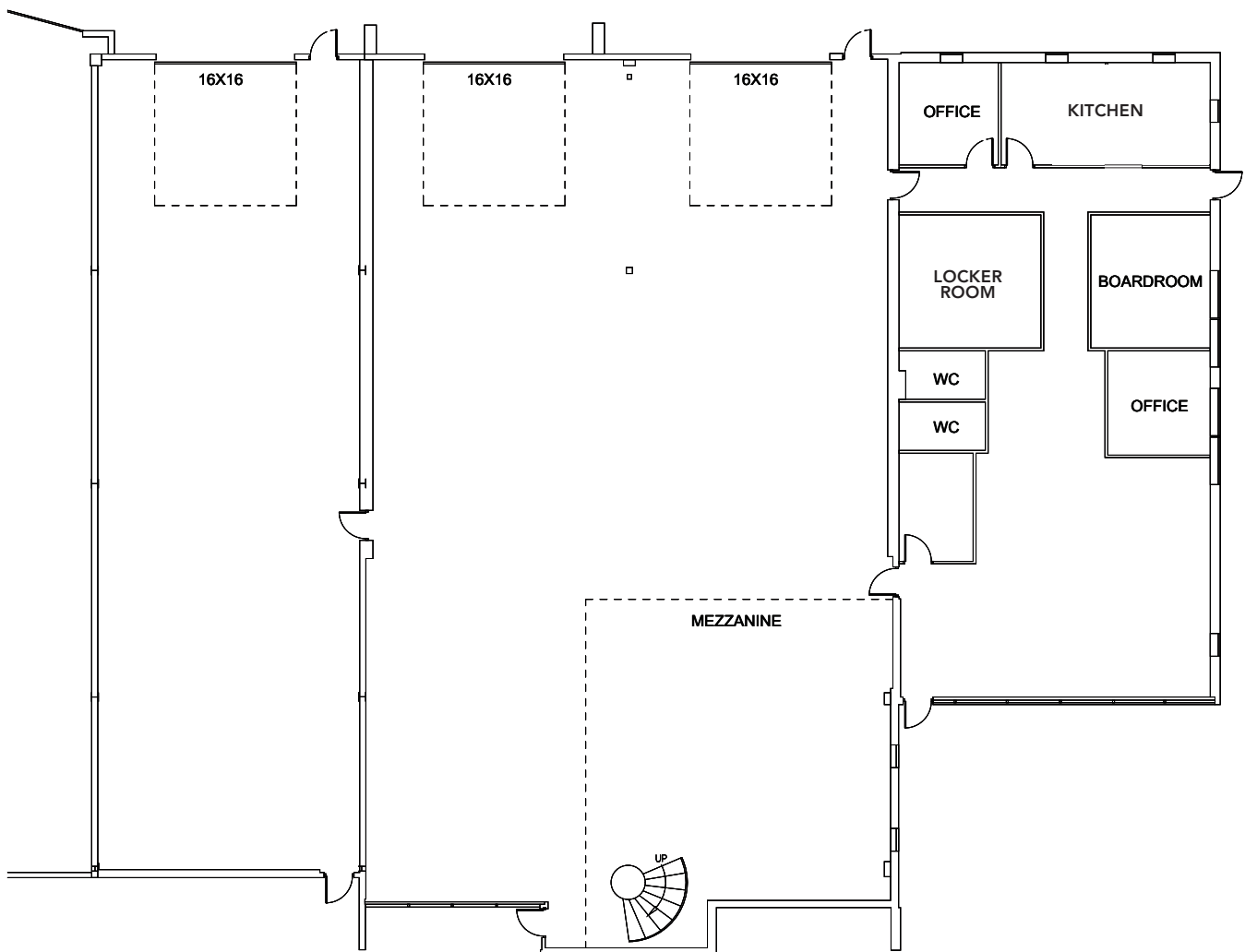
Miguel Martinez | Special Projects Manager

780.421.4000 | miguel@yorkrealty.ca | [YORKREALTY.CA](https://www.yorkrealty.ca)

Canadian Western Bank Place

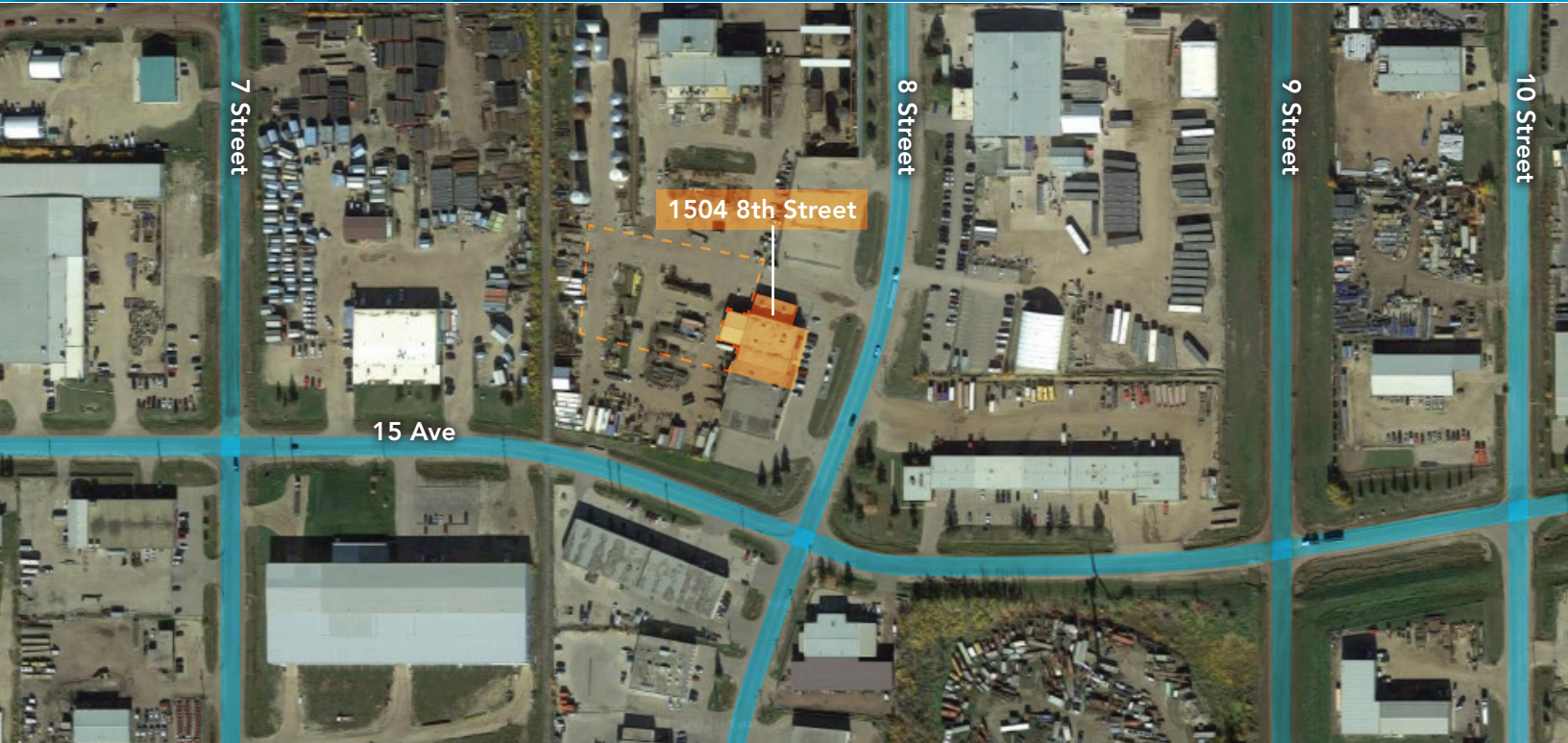
Suite 1622, 10303 Jasper Avenue
Edmonton, Alberta | T5J 3N6

Floor Plan



GLM Building 1 1504 8 Street

Nisku, Alberta



Site Tour Information

Site tours by appointment only

Miguel Martinez | Special Projects Manager

780.421.4000 | miguel@yorkrealty.ca | [YORKREALTY.CA](https://www.yorkrealty.ca)

Canadian Western Bank Place

Suite 1622, 10303 Jasper Avenue
Edmonton, Alberta | T5J 3N6