

Available Building  
6,400 SF

Available  
MAR 1, 2024



FOR LEASE



# LOCATION

#3 - 925 30th Street  
Calgary, AB

## AIRPORT

Only a 22 Minute Drive  
(14.2 km) from the Calgary  
International Airport

## PROXIMITY

Located amongst a variety  
of commercial an industrial  
advantages. Close by to the  
Marlborough and Sunridge  
Malls, the Telus Spark Science  
Centre, and only a 13 minute  
drive (8.0 km) drive from  
downtown Calgary.

## ACCESS

Location is easily accessible  
from the Trans Canada  
Highway, Barlow Trail,  
and Memorial Drive.



**MORE  
NEARBY?**

The town of Chestermere  
is only a 17 minute  
drive away (15.1km)



**LEASE  
RATE**  
Market

**OP  
COSTS**  
\$5.18 PSF

# BUILDING



## ADDRESS

#3 - 925 30th Street  
Calgary, AB



## AVAILABLE

6,400 SF



## ZONING

I-G  
Industrial  
General



## CLEAR HEIGHT

24'



## LIGHTING

LED



## POWER

TBC



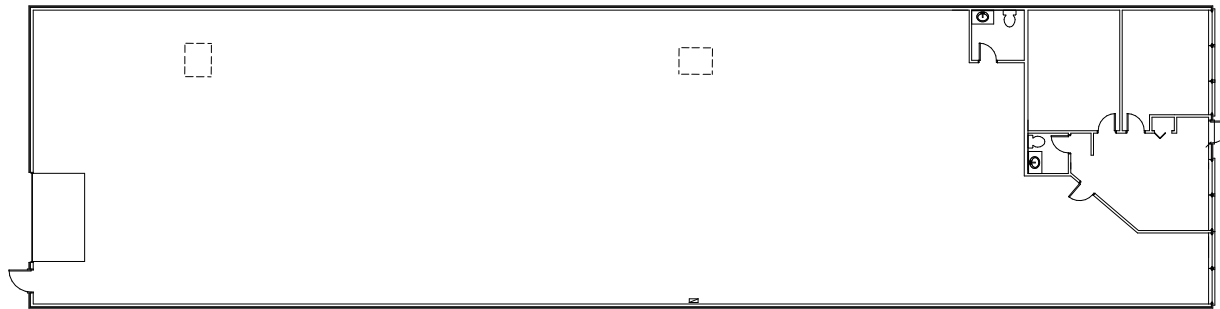
## LOADING

1 Grade Door



## YEAR BUILT

1977







FOR MORE  
INFORMATION  
CONTACT

Andrew Rudzitis | Director - Customer Solutions

587.572.3175 | [andrew@yorkrealty.ca](mailto:andrew@yorkrealty.ca)

Lucas Leisen | Leasing Manager – Edmonton

780.934.2929 | [lucas@yorkrealty.ca](mailto:lucas@yorkrealty.ca)