

Santa Fe Plaza - #201, 18216 102 Avenue NW
Edmonton, Alberta

**Landlord will provide
a fully renovated
turn key office**



PROPERTY HIGHLIGHTS

- Located in the Santa Fe Plaza in Northwest Edmonton
- Well-maintained and nicely landscaped plaza
- Second floor office space
- Great access to 184 Street, Stony Plain Road and the Anthony Henday
- Elevator

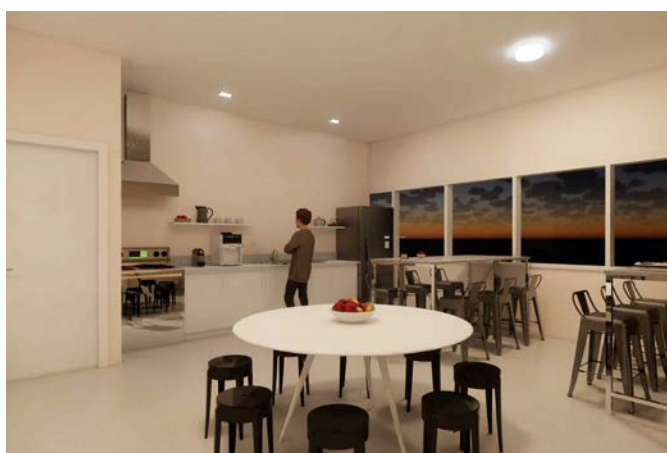
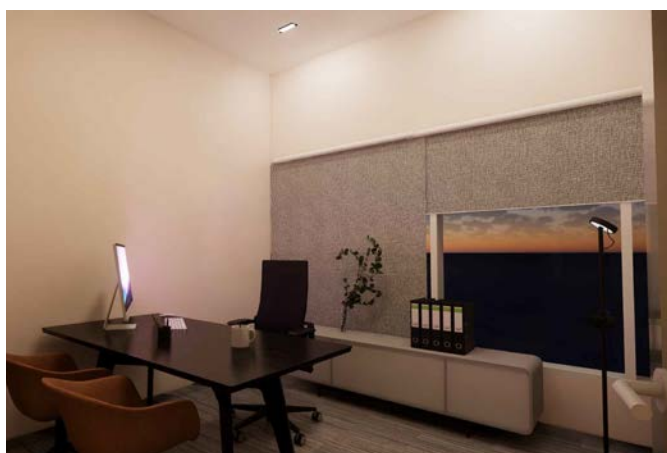
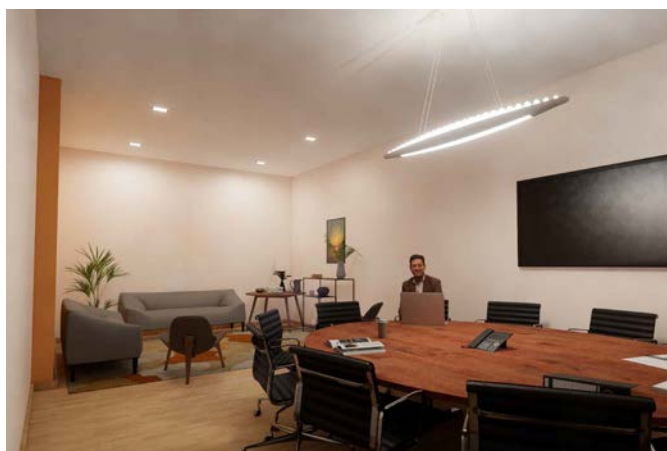
Site Tour Information Site tours by appointment only

Miguel Martinez | Special Projects Manager
780.421.4000 | miguel@yorkrealty.ca | YORKREALTY.CA

Canadian Western Bank Place
Suite 1622, 10303 Jasper Avenue
Edmonton, Alberta | T5J 3N6

Santa Fe Plaza - #201, 18216 102 Avenue NW

Edmonton, Alberta



DETAILS

Building	Santa Fe
Year Built	1990
Product	Second floor office
Address	#201, 18216 - 102 Ave NW
Total Vacant	3,015 SF
Zoning	DC
Heating	HVAC
Lighting	LED
Fiber	Yes
Sprinklers	Yes
Parking	Dedicated stalls in front of space; scramble parking throughout the complex

LEASE INFORMATION

Operating Costs	\$6.95 PSF (est. 2020)
Lease Rate	\$13.00 PSF
Available	Immediately

Site Tour Information

Site tours by appointment only

Miguel Martinez | Special Projects Manager

780.421.4000 | miguel@yorkrealty.ca | YORKREALTY.CA

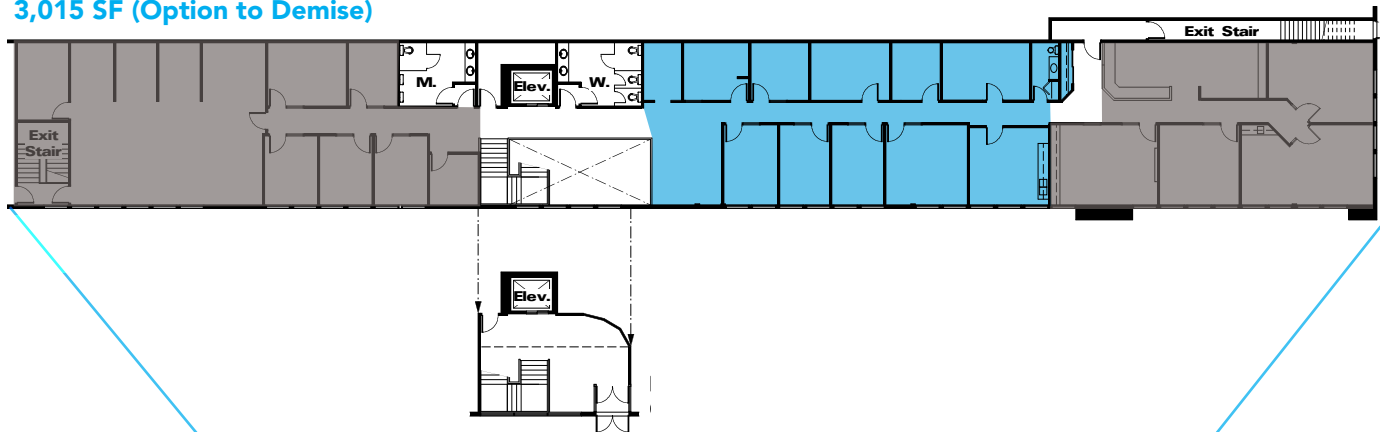
Canadian Western Bank Place

Suite 1622, 10303 Jasper Avenue
Edmonton, Alberta | T5J 3N6

Santa Fe Plaza - #201, 18216 102 Avenue NW
Edmonton, Alberta

FLOOR PLAN

TOTAL VACANT
3,015 SF (Option to Demise)



Santa Fe Plaza - #201, 18216 102 Avenue NW
Edmonton, Alberta



Site Tour Information Site tours by appointment only

Miguel Martinez | Special Projects Manager

780.421.4000 | miguel@yorkrealty.ca | YORKREALTY.CA

Canadian Western Bank Place

Suite 1622, 10303 Jasper Avenue
Edmonton, Alberta | T5J 3N6