

Available For Lease



INDUSTRIAL OFFICE & WAREHOUSE OPPORTUNITY

**Barlow Centre - 4888 72 Avenue SE**

Calgary, Alberta



## PROPERTY HIGHLIGHTS

This property is directly located on 72nd Avenue SE providing easy access to Barlow, Glenmore, and Stoney Trail. Excellent option for a distribution user. Includes rail access.

Operating costs INCLUDE UTILITIES.

This building is ESFR ready.

**Site Tour Information** Site tours by appointment only

Andrew Rudzitis | Leasing Manager  
587.572.3175 | [andrew@yorkrealty.ca](mailto:andrew@yorkrealty.ca)

1206 20 Avenue SE  
Calgary, AB T2G 1M8

[YORKREALTY.CA](http://YORKREALTY.CA)

Available For Lease



INDUSTRIAL OFFICE & WAREHOUSE OPPORTUNITY

**Barlow Centre - 4888 72 Avenue SE**

Calgary, Alberta

**DETAILS**

Size	110,307 SF (2,669 SF Office)
Loading	11 Dock Doors
Clear Height	28'
Rail Access	Yes

**LEASE INFORMATION**

Operating Costs	\$3.56 PSF (est 2020) Utilities Included
Lease Rate	Market
Available	November 1, 2019



**Site Tour Information** Site tours by appointment only

Andrew Rudzitis | Leasing Manager  
587.572.3175 | andrew@yorkrealty.ca

1206 20 Avenue SE  
Calgary, AB T2G 1M8

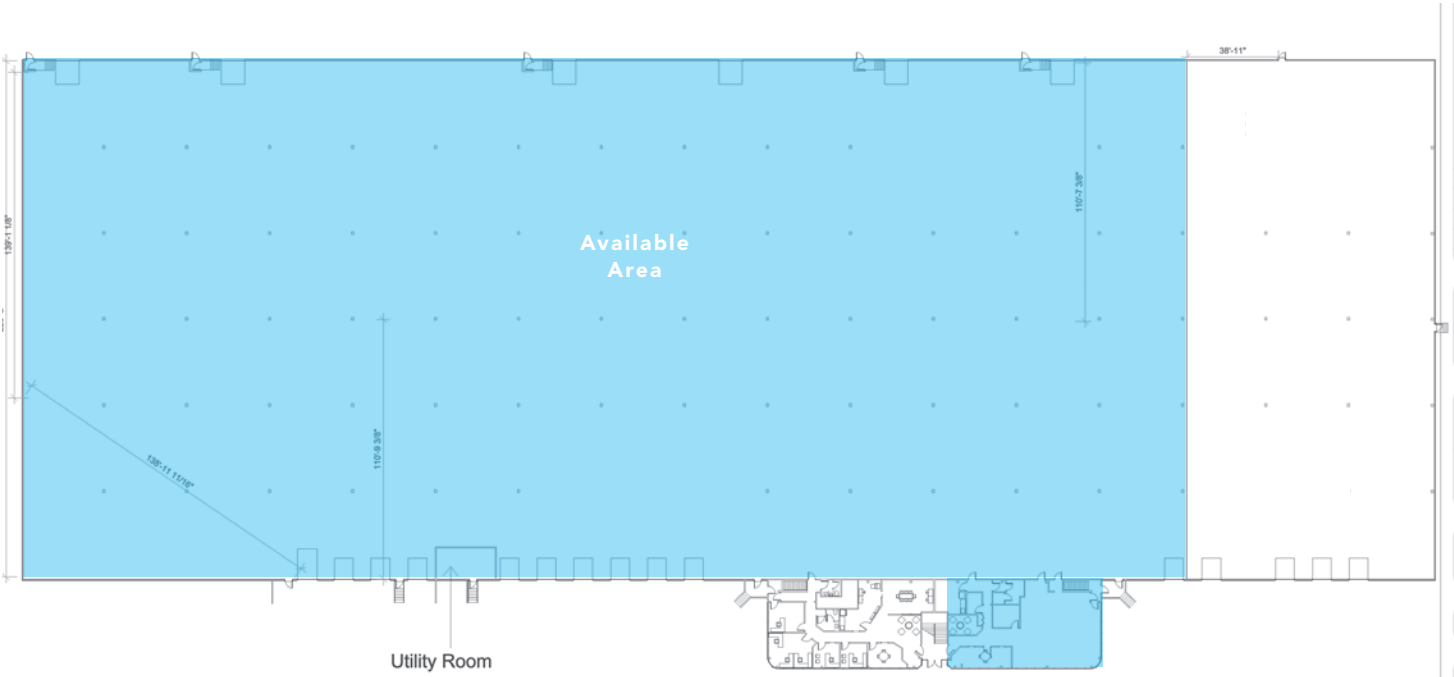
**YORKREALTY.CA**



INDUSTRIAL OFFICE & WAREHOUSE OPPORTUNITY

**Barlow Centre - 4888 72 Avenue SE**  
Calgary, Alberta

**FLOOR PLAN**



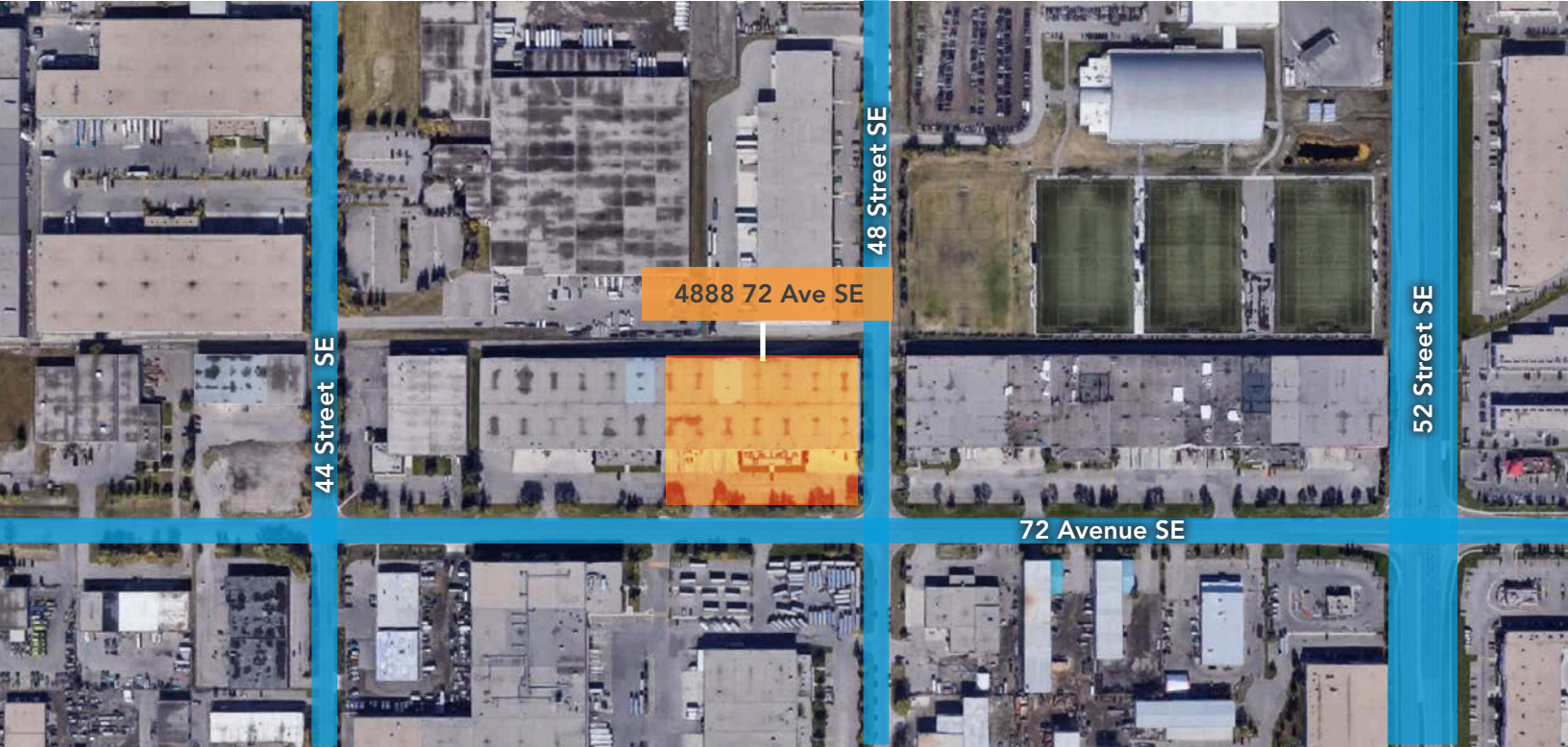
Available For Lease



INDUSTRIAL OFFICE & WAREHOUSE OPPORTUNITY

## Barlow Centre - 4888 72 Avenue SE

Calgary, Alberta



### Site Tour Information Site tours by appointment only

Andrew Rudzitis | Leasing Manager  
587.572.3175 | [andrew@yorkrealty.ca](mailto:andrew@yorkrealty.ca)

1206 20 Avenue SE  
Calgary, AB T2G 1M8

[YORKREALTY.CA](http://YORKREALTY.CA)