



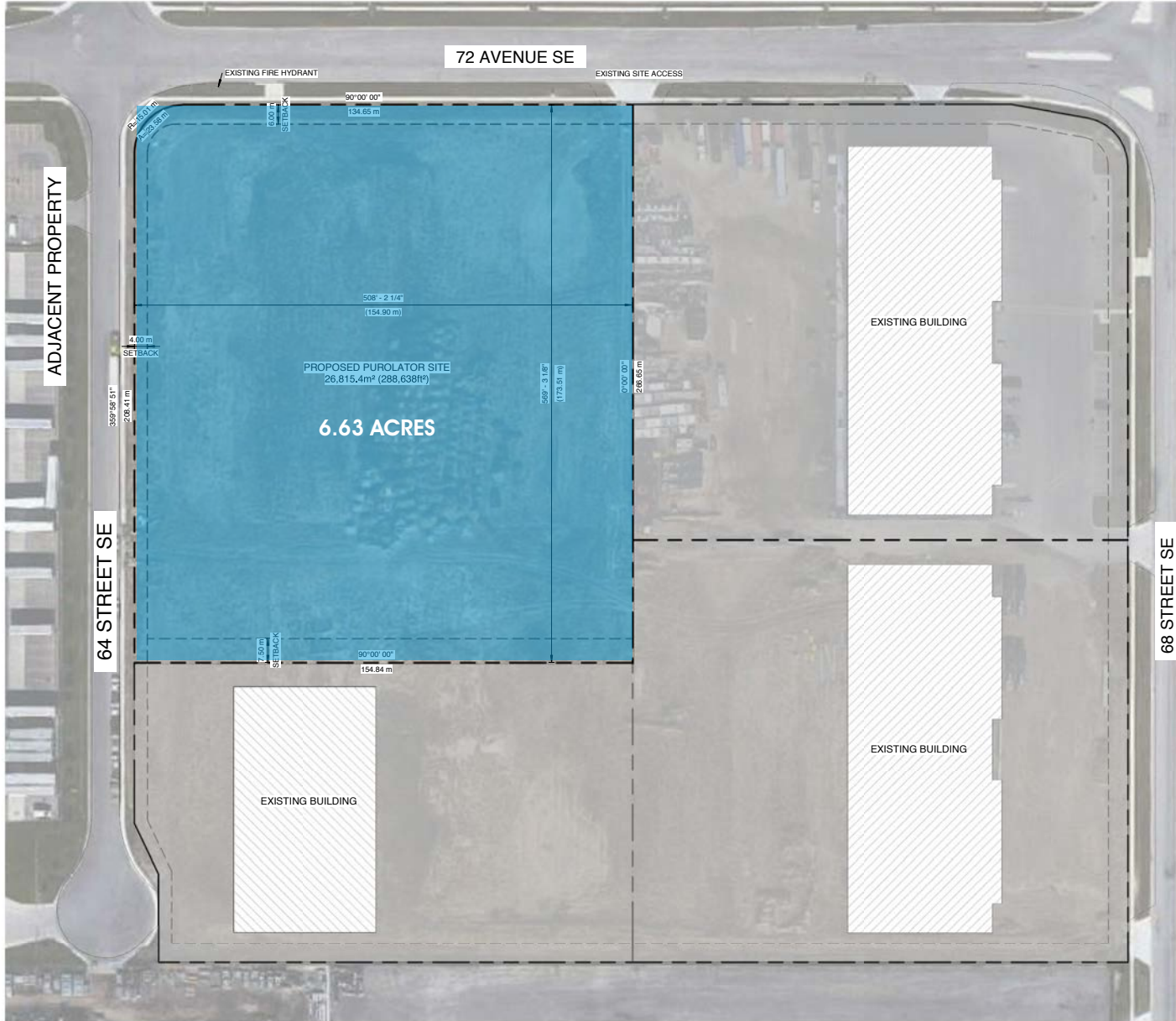
GREAT PLAINS

INDUSTRIAL PARK

YORK LAND
UP TO 6.63 ACRES



SITE PLAN



BUILD TO SUIT LAND

6.63 ACRES

- Multiple Build-To-Suit options available
- Frontage onto 72nd Avenue SE
- Bus stop on site



Suite 1622, Canadian Western Bank Place
10303 Jasper Avenue | Edmonton, Alberta | T5J 3N6 | T 780.421.4000

YORKREALTY.CA

Andrew Rudzitis

Leasing Manager

587.572.3175

andrew@yorkrealty.ca

Matt Woolsey

President

780.421.4000

matt@yorkrealty.ca